

# KANSAS CITY MATCH PLAY 1902 - 1941

(age of player)

Year	Site	Champion	Runner-Up	Margin	Medalist	Score
1902	Aug 15-Sept 15	Kansas City CC	Richard Taylor	Edgar O. Bragg (31)	1 up (38)	Richard Taylor 88
1903	June 6 - Oct 3	KCCC & Evanston	Edgar O. Bragg (32)	George Murray		Not reported
1904	Aug 27-Sept 10	Evanston	W.J. Foye	Robert W. Hodge (25)	2 up	W.J. Foye 86
1905	Aug 28-Sept 2	Kansas City CC	Edgar O. Bragg (34)	J.C. Meredith	6&4	Robert W. Hodge (25) 87
1906	Oct 11-13	Evanston	Robert W. Hodge (27)	C.R. 'Rand' Jones (25)	2&1	Robert W. Hodge (26) 90
1907	Sept 17-21	Kansas City CC	Everett H. Seaver (21)	Edgar Bragg (36)	10&8	Robert W. Hodge (27) 83
1908	Sept 19-26	Evanston	Everett H. Seaver (22)	Robert W. Hodge (29)	2&1	B.H. Schaufler 84 H.W. Mackirdy 84
1909	Aug 30-Sept 4	Kansas City CC	Jere S. Lillis	F.M. Rhodes	1 up	Not reported
1910	Sept 13-17	Evanston	C.R. 'Rand' Jones (29)	Everett H. Seaver (24)	3&2	Not reported
1911	Sept 12-16	Kansas City CC	Raymond Thorne	Dr. J.E. Logan	1 up	Robert W. Hodge (31) 79
1912	Sept 28-Oct 5	Evanston	E.R. Morrison (33)	Raymond Thorne	8&7	Rev. Burris Jenkins 77
1913	Sept 20-27	Kansas City CC	E.R. Morrison (34)	Raymond Thorne	2&1	Dr. G.L. Miller 77
1914	Sept 8-13	Evanston	C.R. 'Rand' Jones (33)	E.R. Morrison	9&7	Robert W. Hodge (34) 72
1915	Sept 12-19	Blue Hills	C.R. 'Rand' Jones (34)	Arthur Ecklund (19)	5&4	Eddie R. Morrison (36) 80
1916	Aug 19-25	Mission Hills	Henry Decker (18)	Robert Hodge (36)	4&2	Henry Decker (18) 79
1917	Aug 25-Sept 1	Hillcrest	Dr. G.L. Miller	Henry Decker (20)	3&2	Robert W. Hodge (37) 89
1918			No Tournament due to World War I			
1919	Sept 2-6	Kansas City CC	Arthur Ecklund (23)	James Nugent	5&4	R.R. Mitchell 78
1920	Aug 23-28	Blue Hills	Jess Stuttle	Ray Ouimet (23)	5&4	Ray Ouimet (23) 40-36 - 76
1921	Aug 22-27	Hillcrest	Ray Ouimet (24)	E.R. Alexander	8&7	Ray Ouimet (24) 39-39 - 78
1922	Aug 28-Sept 2	Kansas City CC	Ray Ouimet (25)	Hugh Brann (45)	10&9	Jess Stuttle 37-37 - 74
1923	Aug 26-Sept 1	Lakewood	Henry Decker (25)	Frank Aylward	9&8	Henry Decker (25) 40-37 - 77
1924	June 17-22	Meadow Lake	Bill Bucher	Al Collins	2&1	Bill Bucher 34-36 - 70
1925	July 20-25	Milburn	Roland Ford, jr (20)	Jack Cannon	1 up (19)	Bill Bucher 36-36 - 72
1926	July 26-31	Mission Hills	Roland Ford, jr (21)	H.E. Ragland	11&10	"Jug" McSpadden 72
1927	July 10-15	Oakwood	Paul Jackson (17)	Frank Alff	4&3	Paul Jackson (17) 70
1928	July 9-14	Swope Park	Paul Jackson (18)	Frank Aylward	5&3	Earl Rowe 34-36 - 70 Roy Peterson 35-35 - 70
1929	July 15-20	Meadow Lake	Morton Benedict (22)	George Wheat	1 up	Eddie Guettel 37-36 - 73
1930	July 8-13	Kansas City CC	Carey Ballew, jr (19)	Frank English	5&3	Maurice R. Smith 37-39 - 76
1931	July 13-19	Mission Hills	Carey Ballew, jr (20)	Les Lovelace	5&4	Maurice R. Smith 36-36 - 72
1932	June 13-18	Oakwood	Carey Ballew, jr (21)	Frank English	6&4	Paul Jackson (22) 35-35 - 70
1933	June 20-24	Wood Hill	Kendall Mayor (21)	Grable Duvall, jr (35)	1 up	O.O. Rose 36-37 - 73 Frank Aylward 35-38 - 73 Grable Duvall, jr (35) 37-36 - 73
1934	Sept 17-22	Blue Hills	Kendall Mayor (22)	Grable Duvall, jr (36)	1 up	Kendall Mayor 35-36 - 71
1935	Sept 16-21	Indian Hills	Grable Duvall, jr (37)	Carey Ballew, jr (24)	4&3	Warren Riepen (22) 36-35 - 71
1936	Aug 31-Sept 5	Milburn	Walter Blevin (24)	Grable Duvall, Jr	1 up (38)	Walter Cash (18) 34-36 - 70
1937	Aug 10-15	Hillcrest	Larry Beyers	Ayres Bombeck	2 up	Bob Willits (19) 38-33 - 71 Grable Duvall, Jr (39) 36-35 - 71

## COURSES OPENED

Kansas City CC.....	1895 / 1926	Loose Park / 63rd & Indian Lane
Swope Park .....	1906 / 1934	On the hill
Blue Hills .....	1912 / 1963	63rd & Paseo / 127th & State Line
Mission Hills.....	1914	State Line Road & Shawnee Mission Pkw
Oakwood .....	1912	9800 Grandview Road
Evanston/Hillcrest.....	1901/1916	site of Southeast HS / 85th & Hillcrest Rd
Indian Hills.....	1927	Mission Road & Tomahawk Road
Meadow Lake/U. of KC.....	1917	75th & State Line (southwest quadrant)
Lakewood/Wood Hill .....	1920	Vivion Road & Chouteau Trafficway

1938	July 19-24	Oakwood	Walter Blevins (26)	Grable Duvall	4&2	Bill Powell	31-38 - 69
1939	July 11-15	Kansas City CC	Larry Beyers	Buck Weaver	3&2	Tom Stephenson (22)	72
1940	July 15-20	Mission Hills	Bob Busler	Bob Willits (22)	5&3	Ned Embry	72-72 - 144
1941	July 14-19	Oakwood	Tom Stephenson (24)	Gordon Myers	7&5	Walter Cash	77-66 - 143
						Hap Goodwin	74-69 - 143
						Bill McGrath	73-70 - 143

1942-1944 No tournament due to World War II

**Youngest Champion**

14 Tom Watson 1964

**Youngest Medalist**

- 17 Stewart Shockley, 1972
- 18 Henry Decker, 1918
- 18 Paul Jackson, 1927
- 18 Walter Cash, 1936
- 18 Dale Kutz, 1970

**Oldest Champion**

- 54 Steve Groom, 2013
- 47 Jack House, 1962
- 46 Bill Ludwig, 1974

**Oldest Medalist**

- 54 Jack House, 1969

**Most Championships Won**

- 4 Carey Ballew, jr. .... 1930, 1931, 1932, 1951
- 4 Charles Van Dyne .... 1968, 1970, 1971, 1980
- 3 C.R. "Rand" Jones ..... 1910, 1914, 1915
- 2 20 players

**Most Times Runner-up**

- 4 Grable Duvall, jr. .... 1933, 1934, 1936, 1938
- 3 Robert W. Hodge ..... 1904, 1908, 1916
- 2 10 players

**Most Times in Final**

- 5 Grable Duvall, jr.
- 5 Carey Ballew, jr.
- 4 Robert W. Hodge

**Most Times Medalist**

- 6 Robert W. Hodge ..... 1905, 1906, 1907, 1911, 1914, 1917
- 4 Tom Stephenson ..... 1939, 1951, 1952, 1958
- 3 Stewart Shockley ..... 1972, 1976, 1977
- 2 16 players

**Longest Final Match**

39 holes

- 1946 Tom Stephenson def Fred Schindler at Indian Hills
- 1954 Johnny Nash def Tom Garrity at Oakwood
- 1963 Bob Harvey, jr. def Bob Devine at Milburn
- 1965 Don Bell, jr. def Rodney Horn at Hillcrest

**Largest Final Match Margin of Victory**

- 11&10 1926 Roland Ford def H.E. Ragland at Mission Hills
- 11&10 1966 Gene Elstun def Arnie Garfinkel at Meadowbrook
- 10&8 1967 Tom Watson def Howard Parker at Oakwood

**Largest Margin of Victory 18 hole match**

- 9&8 1902 E.C. Sullivan def Stanley Young at KCCC
- 1917 Charles Herndon def Homer Irwin at Hillcrest
- 1931 Maurice Smith def John Atherton at Mission Hills
- 1971 Dave Hartung def Robert Lang at Blue Hills

**Longest 18 hole match**

- 26 holes 1992 Tom Hopper def Ed Grom at Paradise Pte.
- 25 holes 1965 Ken Bass def C.C. McMurtry at Hillcrest
- 24 holes 1950 Neil Callahan def Bob Willits at Hillcrest
- 1952 Joe Bauers def Grover Johnson at Indian Hills
- 1961 Cory Helms def John Thorpe at Meadowbrook
- 1982 Ron Akin def Dick Tucker at Meadowbrook



Kansas City  
CC circa  
1929  
looking  
north.  
Polo field at  
left  
is present  
day #5

63rd Street  
is in the  
foreground

# The Kansas City Match Play



Kansas City CC, later Loose Park, 1896-1926 looking southwest

Both the *Kansas City Times/Star* and the *Kansas City Journal* offered conflicting and incomplete accounts of the first three Kansas City Match Play tournaments. As of May, 2013, the information for the 1902, 1903 and 1904 tournaments is all that has been discovered.

<b>1902</b>				<b>1904</b>	
Kansas City CC, Par				Evanston Club	
August 16 - September				Aug 27 - Sept 10	
1	Richard Taylor, Evanston.....42-46 - 88	Bragg	v	Mackenzie .....	86
	George Murray, KCCC .....50-41 - 91	Gilbert	v	Norberg .....	88
3	E.C. Sullivan, Evanston .....45-47 - 92	Hodge	v	Harwood .....	89
	Edgar Bragg, KCCC .....45-47 - 92	<b>Quarterfinals</b>			
5	J.G. Forrest, KCCC .....47-46 - 93	Taylor	def	Forrest.....5&4	88
6	William S. Gilbert, KCCC .....50-47 - 97	Sullivan	def	Young .....9&8	89
7	F. Stanley Young, KCCC .....52-46 - 98	Murray	vs	Griffith .....	92
8	Robert W. Hodge, Evanston.....51-49 - 100	Bragg	vs	McKnight.....	94
9	J.A. Roberts, Evanston.....52-49 - 101	<b>Semifinals</b>			
	A.C. Griffith, KCCC .....51-50 - 101	Taylor	def	Sullivan	96
11	C.F. Holmes, KCCC .....49-56 - 105	<b>Finals</b>			
12	William C. Mackenzie, KCCC 56-50 - 106	Taylor	def	Bragg .....1 up (38)	97
	J.S. Lillis, Evanston .....52-54 - 106	<b>1903</b>			
14	George B. Norberg, Evanston..57-53 - 110	Evanston Club & Kansas City CC			
	C.E. Welbourn, KCCC.....56-54 - 110	June 13 - Aug			
	J.T. Harwood, KCCC .....54-60 - 114	The great flood caused many postponements in the second Kansas City Match Play tournament. (See page 4)			
<b>1st Round</b>		<b>Semifinals</b>			
Taylor	def Roberts.....	Edgar O. Bragg	def	Richard Taylor 6&4	100
Sullivan	def Holmes.....	George Murray	def	(?)	100
Forrest	def Lillis.....	<b>Finals</b>			
Young	def Welbourn .....	Edgar O. Bragg	def	George Murray	101
Murray	v Griffith.....	<b>Final</b>			
		W.J. Foye def Robert W. Hodge ...2 up			



Edgar O. Bragg  
Champion 1903, 1905  
(photo taken in 1950 when  
Bragg was 79)



The flood of 1903 wrecked havoc on Kansas City

In April, 1906 the  
San Francisco  
earthquake left 503  
dead with \$350 mil-  
lion in property  
damage.

Robert W. Hodge  
Champion 1906  
Runner-up 1904, 1908, 1916  
Medalist 1905, 1906, 1907, 1911,  
1914, 1917  
Missouri Amateur Champion  
1911, 1916



**1905**

Kansas City CC  
Aug 28 - Sept 2

- 1 Robert W. Hodge, Evanston.....87
- 2 Edgar Bragg, KCCC .....91
- 3 Charles R. Russell, KCCC .....92
- 4 J.C. Meredith, KCCC.....99
- 5 C. R. Jones, Evanston .....101
- E.H. Shauffler, Evanston.....101
- Stanley Young, KCCC .....101
- R.A. James, KCCC .....101
- E.R. Morrison, Evanston .....101
- 10 Garland M. Jones, Evanston .....104
- E.F. Swinney, KCCC .....104
- George Murray, KCCCC .....104
- 13 William C. Mackenzie, KCCC ....105
- 14 M.G. Payne, Evanston .....106
- 15 J.G. Forest, KCCC .....108
- Ike Dunlap, KCCC.....108

**1st Round**

- Hodge def G.M. Jones
- Russell def Swinney
- C.R. Jones def Shauffler
- Meredith def Forest
- Young def Dunlap
- James def Murray
- Morrison def Mackenzie
- Bragg def Payne

**Quarterfinals**

- Bragg def C.R. Jones
- Meredith def Russell
- Young def James
- Hodge def Morrison

**Semifinals**

- Bragg def Young
- Meredith def Hodge

**Finals**

- Bragg def Meredith .....6&4

**1906**

Evanston Club  
October 11-13

- 1 Robert W. Hodge, Evanston..... 90
- C.R. Jones, Evanston ..... 94
- L.W. Hall..... 98
- S.R. Knott ..... 98
- B.D. Rowe, ..... 98
- J.P. Cudahy,..... 99
- T.H. Sawyer, ..... 100
- G.L. Miller, Evanston ..... 100
- George Murray, KCCC ..... 100
- David Thornton, Evanston ..... 101
- J.Q. Chambers, Evanston ..... 101
- Charles R. Russell, KCCC ..... 102
- J.G. Farrington, ..... 102
- J.L. Powell, ..... 103
- Everett H. Seaver, Evanston ..... 103
- F. Stanley Young, KCCC ..... 103

**1st Round**

- Cudahy def Rowe ..... bye
- Hodge def Seaver.....4&3
- Young def Chambers .....3&2
- Murray def Miller .....3&1
- Farrington def Thornton.....2 up
- Knott def Powell .....2 up
- Russell def Sawyer .....5&4
- Jones def Hall.....3&2

**Quarterfinals**

- Jones def Russell.....5&4
- Hodge def Cudahy .....6&4
- Knott def Farrington.....2 up
- Young def Murray ..... default

**Semifinals**

- Jones def Knott .....6&5
- Hodge def Young .....7&6

**Finals**

- Hodge def Jones.....2&1

**1907**

Kansas City CC  
Sept 17-21

- 1 Robert W. Hodge, Evanston.....83
- 2 C.R. Jones, Evanston .....84
- 3 Edgar Bragg, KCCC .....87
- 4 J.G. Forrest, KCCC.....88
- 5 Louis Long, Evanston .....90
- 6 George Murray, KCCC .....91
- Everett H. Seaver, Evanston .....91
- 8 L.B. Dunlap, KCCC.....92
- 9 K.C. Reed, KCCC.....94
- 10 H. Mackirdy, KCCC .....95
- A.B. MacBeth, KCCC .....95
- E.F. Shauffler, Evanston .....95
- W.H. Fible, Evanston .....95
- Paul Jenkins, Evanston .....95
- 15 R.J. Campbell, KCCC.....96
- 16 J.W. Sherer, Evanston .....97

**1st Round**

- Murray def C.R. Jones .....3&2
- Seaver def Mackirdy .....6&5
- Hodge def Fible .....7&6
- Sherer def Jenkins .....1 up (21)
- Long def Dunlap .....6&5
- Forrest def MacBeth.....2 up
- Campbell def Schauffler.....1 up (19)
- Bragg def Reed .....1 up (19)

**Quarterfinals**

- Seaver def Murray .....2&1
- Hodge def Sherer .....8&6
- Long def Forrest .....1 up
- Bragg def Campbell .....3&1

**Semifinals**

- Seaver def Hodge .....3&2
- Bragg def Long .....1 up

**Finals**

- Seaver def Bragg .....10&8

In 1908  
Henry Ford  
introduced the  
Model T car,  
priced at  
\$850.



Everett H. Seaver (21)  
Champion 1907, 1908

In 1910 a round-trip  
ticket on the  
Missouri Pacific Railroad  
from  
Kansas City to  
St. Louis was  
\$10!

**1908**

Evanston Club, Bogey 88  
September 19-26

- 1 E.H. Schaufler, Evanston .....84
  - H.W. Mackirdy, KCCC .....84
  - 3 B.A. Jenkins, Evanston .....85
  - 4 C.R. 'Rand' Jones, Evanston ..86
  - 5 E.R. Morrison, Evanston .....87
  - 6 Hugh E. Brann, Evanston .....88
  - 7 S.J. Mattox, Elm Ridge .....91
  - Seth Ward, KCCC .....91
  - 9 F.W. Schafer, Evanston .....93
  - 10 R.S. McIntosh, Evanston .....94
  - 11 J.Def. Ritchey, Evanston .....95
  - E.C. Lorton, Elm Ridge .....95
  - J.C. Fennell, Evanston .....95
  - Robert Lakenan, jr, Evanston ..95
  - 15 P.T. Campbell, KCCC .....96
  - Lester W. Hall, KCCC .....96
  - G.M. Jones, Evanston .....96
  - E.O. Moffitt, Evanston .....96
  - Rev. Robert Talbot, Evanston ..96
  - 20 C.S. Kemper, Evanston .....97
- The following players scores were  
not reported to the Kansas City Star.
- Robert W. Hodge, Evanston.....
  - Everett Seaver, Evanston .....
  - Edgar Bragg, KCCC .....
  - Logan, Elm Ridge .....
  - Richard Taylor, Evanston.....
  - Williams, Evanston .....
  - Roberts, Evanston .....
  - Dr. J.W. Sherer, Evanston .....
  - L.H. Sawyer, Evanston .....
  - D.T. Thornton, Evanston.....
  - G.E. Grace, Evanston.....
  - Victor Wilson, Evanston .....
- Kemper won a 4 for 1 18 hole playoff for the  
32nd spot in the bracket

McIntosh	def	Campbell .....	2&1
Hodge	def	Morrison .....	default
Mattox	def	Jenkins .....	default
Ward	def	Fennell .....	default
Lakenan	def	C.R. Jones.....	2&1
Kemper	def	Moffitt .....	574
Seaver	def	Hall .....	3&1
Bragg	def	Logan.....	5&3
Brann	def	Taylor .....	default
Williams	def	Schafer.....	2&1
Roberts	def	Sherer .....	1 up
Sawyer	def	Thornton.....	1 up
Schaufler	def	Grace .....	3&1
Mackirdy	def	Rev. Talbot .....	3&2
G.M. Jones	def	Lorton .....	4&3
Wilson	def	Ritchey .....	1 up
Seaver	def	Williams .....	3&2
Brann	def	G.M. Jones .....	3&2
McIntosh	def	Shaufler .....	1 up
Hodge	def	Kemper .....	5&3
Mattox	def	Ward .....	2&1
Sawyer	def	Lakenan .....	2&1
Bragg	def	Wilson .....	4&3
Mackirdy	def	Roberts .....	
Seaver	def	Brann .....	3&2
Mackirdy	def	McIntosh .....	3&2
Hodge	def	Mattox .....	5&3
Bragg	def	Sawyer.....	6&5
Seaver	def	Mackirdy .....	4&2
Hodge	def	Bragg .....	4&3
Seaver	def	Hodge .....	2&1

**1st Round**

**2nd Round**

**Quarterfinals**

**Semifinals**

**Finals**

**1909**

Kansas City CC  
Aug 30 - Sept 4  
no scores for qualifiers

**1st Round**

B.A. Jenkins	def	F.A. Britton .....	5&4
A.E. Holmes	def	H. Campbell.....	1 up
J.R. Russell	def	J. Schaufler .....	3&2
C.R. Jones	def	L.C. Bronson.....	5&4
E.S. Nixon	def	R.J. Campbell .....	3&2
L. Sawyer	def	Lester Hall .....	3&2
Dr. Miller	def	W.B. Neff.....	2&1
B. Lakenan	def	R. Cruitt .....	default
Hodge	def		
J.S. Lillis	def		

**2nd Round**

Sawyer	def	Morrison .....	2&1
Lillis	def	Street .....	4&3
Payne	def	Holmes.....	3&2
Dunlop	def	Dr. Miller .....	5&4
Rhodes	def	Russell .....	4&3
C.R. Jones	def	Hodge.....	4&3
Nixon	def	Jenkins .....	1 up
Lakenan	def		

**Quarterfinals**

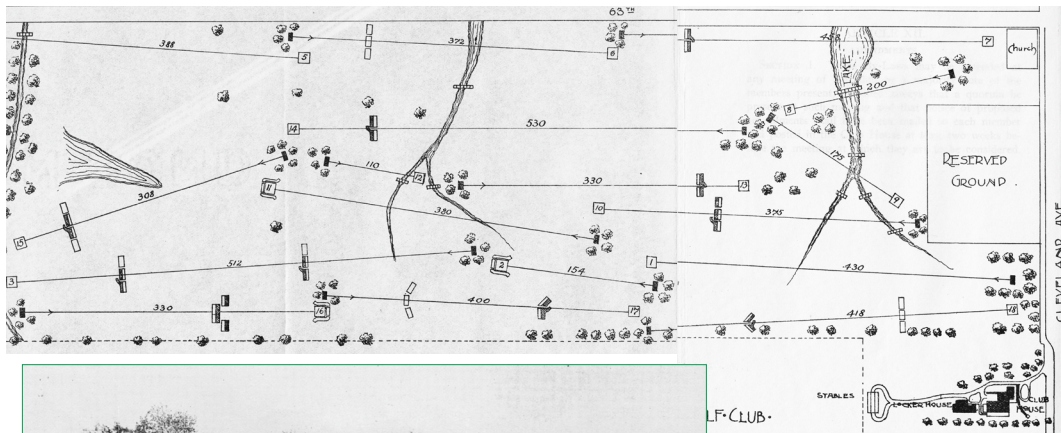
Sawyer	def	Lakenan .....	1 up (20)
Rhodes	def	Dunlap .....	2&1
C.R. Jones	def	Nixon .....	4&3
Lillis	def	Payne .....	473

**Semifinals**

Rhodes	def	C.R. Jones .....	3&2
Lillis	def	Sawyer .....	2&1

**Finals**

Lillis	def	Rhodes .....	1 up
--------	-----	--------------	------



Robert Hodge had just won the 1911 Missouri Amateur the week before in Sedalia.



**Evanston Golf Club**  
located at Meyer Blvd and Swope Parkway



1910		1911	
Evanston Club Sept 13 - 17		Kansas City CC Sept 12 - 16	
no scores for qualifiers		1 Robert W. Hodge, Evanston.....79 (no other qualifying scores)	
Robert W. Hodge.....Evanston		<b>Qualifiers</b>	
P.T. Campbell ..... KCCC		R.J. Campbell .....KCCC	
Def.W. Eaton ..... Evanston		Raymond Thorne.....KCCC	
Dr. J.E. Logan ..... KCCC		Def.F. M. Weeks.....KCCC	
G.L. Miller ..... Evanston		Burris A. Jenkins .....Evanston	
F.M. Rhodes ..... KCCC		C.R. "Rand" Jones ..Evanston	
C.R. Jones ..... Evanston		S.W. Kinnear .....KCCC	
Hyden Eaton.....Evanston		E.C. Smith .....KCCC	
C.R. Reynolds ..... KCCC		Everett Seaver .....KCCC	
L.C. Bronson ..... Evanston		G.M. Payne .....KCCC	
Burris A. Jenkins ..... Evanston		J.A. Roberts .....KCCC	
W.P. Neff ..... Evanston		Charles R. Russell .....KCCC	
E.H. Shauffer ..... Evanston		H. Sternberg ..... Elm Ridge	
H.W. McKirdy..... KCCC		W.W. Goodwin .....KCCC	
Everett .H. Seaver ...Evanston		Dr. J.E. Logan .....KCCC	
J.Q. Chambers ..... Evanston		Porter Hall .....KCCC	
<b>1st Round</b>		<b>1st Round</b>	
Hodge def Campbell.....5&4		Thorne def Campbell..... default	
Eaton def Logan .....1 up		Weeks def Jenkins ..... 2&1	
Miller def Rhodes .....4&2		C.R. Jones def Kinnear ..... 2&1	
C.R. Jones def Eaton .....5&4		Hodge def Smith ..... 4&2	
Russell def Bronson.....4&2		Seaver def Payne ..... 4&2	
Jenkins def Neff ..... 1 up (19)		Roberts def Russell ..... 6&4	
Shauffer def McKirdy.....6&4		Sternberg def Goodwin ..... 5&3	
Seaver def Chambers .....6&5		Dr. Logan def Hall ..... 5&3	
<b>Quarterfinals</b>		<b>Quarterfinals</b>	
Hodge def Eaton .....1 up		Hodge def Sternberg .....1 up	
C.R. Jones def Miller .....2&1		Dr. Logan def Weeks ..... 4&3	
Shauffer def Jenkins .....3&2		Thorne def Seaver ..... 2&1	
Seaver def Russell .....5&3		C.R. Jones def Roberts .....1 up	
<b>Semifinals</b>		<b>Semifinals</b>	
Seaver def Shauffer .....4&2		Thorne def C.R. Jones ..... 4&2	
C.R. Jones def Hodge.....1 up		Dr. Logan def Hodge.....1 up	
<b>Finals</b>		<b>Finals</b>	
C.R. Jones def Seaver .....3&2		Thorne def Dr. Logan .....1 up	

**Evanston Golf Club**  
1911 Scorecard  
Par was not listed but bogey was 80.  
Wooden shafts and gutta percha golf balls.  
The club was located at current site of the Southeast HS neighborhood

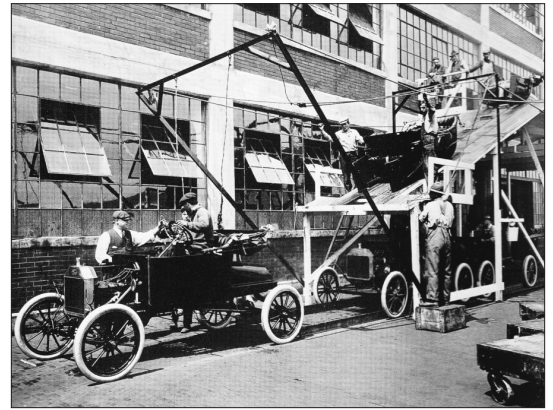
1	430	10	375
2	154	11	380
3	512	12	110
4	330	13	330
5	388	14	530
6	372	15	308
7	458	16	330
8	200	17	400
9	175	18	418
Out	3019	In	3181
		Total 6200	



Robert W. Hodge  
 Champion 1906  
 Runner-up 1904, 1908, 1916  
 Medalist 1905, 1906, 1907,  
 1911, 1914, 1917  
 Missouri Amateur Champion  
 1911, 1916

On April  
 12, 1912  
*The Titanic*  
 sank in the north  
 Atlantic with 1500  
 lives lost

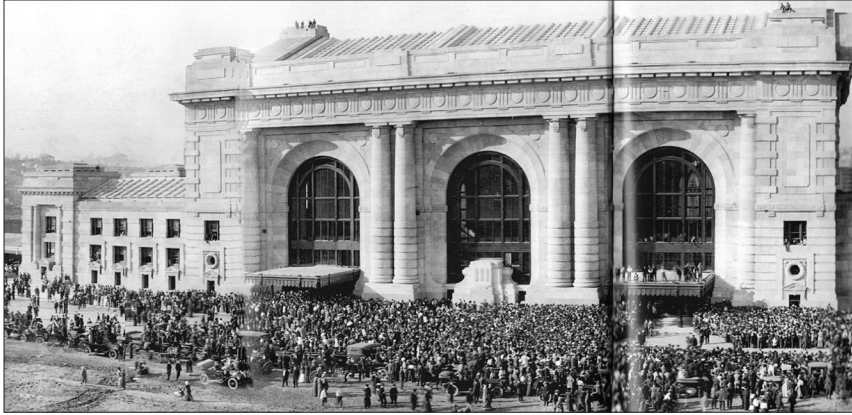
In  
 September,  
 1913  
 Francis Ouimet  
 defeated  
 Harry Vardon and  
 Ted Ray in a U.S.  
 Open playoff



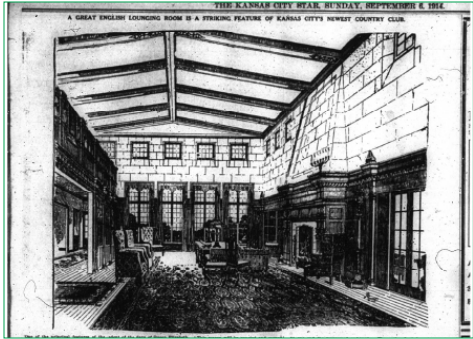
Ford Assembly Line 1913

<b>1912</b>					
Evanston Club Sept 28 - Oct 5		German	def Hutchinson .....8&7	W.P. Neff.....	91
1	Rev. Burriss A. Jenkins, Evanston.....	R.H. Williams	def Dodson .....default	W.O. Sternberg.....	91
2	C.R. "Rand" Jones, Evanston .....79	Thorne	def Graham .....6&5	24 E.P. Ross .....	92
3	Robert W. Hodge, Evanston.....80	<b>2nd Round</b>			
4	Raymond C. Thorne, KCCC.....81	Campbell	def C.R. Jones.....3&2	H.G. Sternberg .....	92
5	Def.W. Eaton, Evanston.....82	Courtney	def Roberts .....bye	W.L. Karnes .....	92
6	J.A. Roberts, KCCC.....83	Hodge	def G.L. Miller .....4&3	E.R. McClelland .....	92
7	Edgar Bragg, KCCC .....84	Johnston	def German .....3&2	W.W. Duke .....	92
	J.L. Johnston, KCCC .....84	Morrison	def Sternberg ..... 1 up (19)	M.F. Dean .....	92
	E.R. Morrison, Evanston .....84	Alexander	def Briggs .....3&2	30 J.A. Roberts .....	93
10	Dr. G.L. Miller, Evanston .....85	Summers	def Def.W. Eaton .....bye	A. Schooley.....	93
	R.J. Campbell, KCCC.....85	Thorne	def R.H. Williams.....bye	<b>1st Round</b>	
	R.H. Williams, .....85	<b>Quarterfinals</b>			
13	P.C. Barbee, Swope Park .....86	Alexander	def Summers..... 1 up (19)	Dr. G.L. Miller	def J.E. Nugent.....2&1
14	Robert Cruitt, Evanston .....87	Morrison	def Hodge .....5&4	R.A. Campbell	def H.G. Sternberg ...5&4
	H.G. Sternberg, Elm Ridge.....87	Thorne	def Johnston.....2&1	E.H. McVey	def W.V. Eaton .....default
16	C.W. German, Evanston .....89	Courtney	def Campbell .....	W.W. Goodwin	def E.P. Ross..... 1 up
17	E.R. Alexander, Swope Park.....90	<b>Semifinals</b>			
18	E.H. Jones, Evanston .....91	Thorne	def Courtney .....2&1	H.W. Mackirdy	def J.C. Meredith..default
	L.V. Graham, .....91	Morrison	def Alexander .....2&1	J.A. Roberts	def Hodge ..... 1 up(19)
	Ed C. Smith, KCCC.....91	<b>Finals</b>			
21	Warren V. Eaton, Evanston .....92	Morrison	def Thorne .....8&7	L.V. Graham	def W.L. Karnes ..... 2 up
22	E.P. Ross, Swope Park .....93	<b>1913</b>			
	H.H. Embry, .....93	Kansas City CC			
	W.R.B. Miller, Swope Park.....93	September 20 - 27			
	M.C. Nelson, Evanston .....93	1	Dr. G.L. Miller, Evanston .....77	Robert Wilson	def Russell, KCCC ...5&4
	W.H.S. Brady, .....93	2	E. R. Morrison .....80	Hugh E. Brann	def M.F. Dean.....5&3
27	W.A.R. Summers, Swope Park .....94		R.A. Campbell .....80	C.R. Jones	def W.P. Neff .....default
	A.H. Courtney, Evanston .....94	4	R.C. Thorne.....81	<b>2nd Round</b>	
	Bruce Dodson, Evanston .....94	5	C.R. Jones.....82	Roberts	def Mackirdy .....2&1
	J.W. Kimberlin, Elm Ridge.....94	6	E.H. McVey .....84	Dr. Miller	def Campbell .....2&1
	H.H. Hutchinson, Swope Park .....94	7	P.T. Campbell.....86	Thorne	def Graham.....5&4
<b>1st Round</b>			Charles R. Russell, KCCC.....86	Morrison	def Russel Jones .....4&3
Morrison	def Ross .....3&1		H.W. Mackirdy .....86	Campbell	def Duke .....3&1
Sternberg	def Kimberlin .....2&1	10	Russell Jones.....87	Brann	def C.R. "Rand" Jones 2 up
Dr. Miller	def Embry .....6&4		L.V. Graham.....87	Sternberg	def Robt Wilson ...default
Alexander	def Jenkins.....3&2		Hugh E. Brann .....87	Goodwin	def McVey .....default
Bragg	def W.Def. Miller .....5&4	13	W.W. Goodwin .....88	<b>Quarterfinals</b>	
B.W. Eaton	def W. Eaton .....default	14	Robert Wilson .....89	Thorne	def Roberts .....3&2
Summers	def Barbee .....default		R. Jurden .....89	Morrison	def Campbell .....7&6
Hodge	def E.H. Jones.....5&4		Robert W. Hodge .....89	Dr. Miller	def Goodwin.....4&3
C.R. Jones	def E.C. Smith .....default	17	J. Duk. Towner.....90	Brann	def Sternberg .....573
Campbell	def Brady .....default		J.E. Nugent.....90	<b>Semifinals</b>	
Nelson	def Robinson .....default	19	W.V. Eaton .....91	Morrison	def Brann.....2&1
Courtney	def Cruitt .....default		J.C. Meredith .....91	Thorne	def Dr. Miller.....4&2
G.L. Johnston	def H. Eaton.....default		Def.W. Eaton.....91	<b>Finals</b>	
				Morrison	def Thorne .....2&1

One month before the tournament  
 World War I began in Europe. *The Star* was still predicting a quick end to hostilities.



Union Station opened in 1914



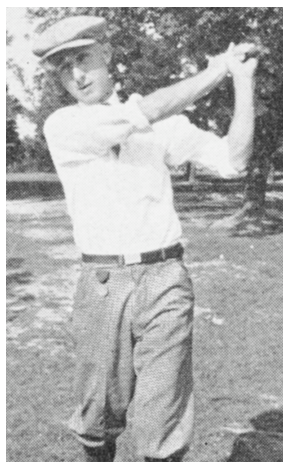
The new Mission Hills clubhouse, 1914 (today's Carriage Club on Stateline Rd.)



**Evanston Golf Club**  
 located at Meyer Blvd and Swope Parkway

<b>1914</b>					
Evanston Club		Arthur Ecklund ..... 88		Russell Jones def Beebee .....4&3	
September 8 - 13		W.C. Scarritt ..... 88		Nugent def Neyhart .....8&7	
1 Robert W. Hodge ..... 72		W.M. Beebe ..... 88		Nelson def Sebree .....5&3	
2 E.P. Ross ..... 78		25 J.P. Tillhoff ..... 89		Tillhoff def Dayton .....default	
3 J.A. Roberts ..... 79		R.L. Jurden ..... 89		McClelland def Roberts .....default	
4 Def.W. Eaton ..... 80		Louis Egan ..... 89		<b>2nd Round</b>	
5 Dr. G.L. Miller, Evanston ..... 81		E.S. Vorhees ..... 89		Morrison def E. Jones .....3&2	
M.R. Nelson ..... 81		A.H. Courtney ..... 89		R. Jones def Nugent .....2 up	
7 C.R. "Rand" Jones ..... 82		30 P.H. Neyhart ..... 90		McClelland def Ward .....2 up	
8 E.R. Morrison ..... 83		J.N. Grant ..... 90		Hodge def Summers .....2 up	
9 A.R. Summers ..... 84		H.J. Diffenbaugh ..... 90		Dr. Miller def Egan .....3&2	
L.V. Graham ..... 84		<b>1st Round</b>		C.R. Jones def C.S. Jones .....5&4	
Russell Jones ..... 84		Hodge def Brann ..... 1 up		Graham def Ross .....3&2	
12 C.S. Jones ..... 85		Summers def Jurden ..... 1 up		Nelson def Tillhoff.....	
C.A. Dayton ..... 85		Dr. G.L. Miller def Ecklund .....7&6		<b>Quarterfinals</b>	
14 W.R.R. Miller ..... 86		Egan def Harrison ..... 1 up (20)		Hodge def Dr. Miller .....4&2	
F.P. Sebree ..... 86		Morrison def Grubor .....2&1		Morrison def McClelland .....6&5	
J.H. Harrison ..... 86		Elliott Jones def Diffenbaugh .....7&6		Nelson def Russell Jones .....6&5	
Elliott Jones ..... 86		Ward def Vorhees .....2 up		C.R. Jones def Graham .....2&1	
Hugh E. Brann, Evanston ..... 86		Ross def W.R.B. Miller ....1 up		<b>Semifinals</b>	
E.R. McClelland ..... 86		Graham def Courtney .....4&2		Morrison def Hodge ..... 1 up (19)	
J.E. Nugent ..... 86		C.R. Jones def Scarritt .....default		C.R. Jones def Nelson ..... 1 up (20)	
21 C.R. Gulbey ..... 88		C.S. Jones def Grant .....default		<b>Finals</b>	
				"Rand" Jones def Morrison .....9&7	





Henry Decker  
Champion  
1916, 1923  
Medalist 1916,  
1923

Missouri  
Amateur  
Medalist 1920



Mission Hills original layout had #9 & 18  
by Stateline Road with the clubhouse across  
the street. Ward Parkway is at the top.



Blue Hills CC  
the view from #1 back to the clubhouse

### 1915

#### Blue Hills

September 12 - 19

1	Eddie R. Morrison, Blue Hills	80
2	C.R. "Rand" Jones, Blue Hills	81
3	Robert W. Hodge, Blue Hills	82
4	Dr. Burris A. Jenkins, Blue Hills	83
5	J. DeK. Towner, Swope Park	85
	Dudley W. Eaton, Evanston	85
7	G.L. Conley, Evanston	86
	R.E. Nace, Blue Hills	86
9	M.B. Nelson, Blue Hills	87
	E.H. Shaufler, Evanston	87
11	W.K. Cundiff, Evanston	88
12	J.G. Goodlett, KCCC	89
	Mason L. Dean, KCCC	89
	R. Wilson, Swope Park	89
	G.H. Sombart, Blue Hills	89
16	A.H. Courtney, Evanston	90
	L.V. Graham, Blue Hills	90
	Elliott H. Jones, Blue Hills	90
	Y.J. Morton, Swope Park	90
	J.G. Forrest, KCCC	90
	R.F. Lakenan jr, Blue Hills	90
22	C.L. Harrelson, Evanston	91
	J.A. Roberts, KCCC	91
	C.W. German, Evanston	91
	Lester Hall, Mission Hills	91
26	Bruce Dodson, Blue Hills	92
	James E. Nugent, Evanston	92
	Robert Cruit, Mission Hills	92
	C.L. Barbee, Evanston	92
	W.A.R. Summers, Swope Park	92
	A.H. Ecklund, Swope Park	92
	E.R. Ross, Evanston	92

#### 1st Round

Conley	def	German	3&2
Ecklund	def	Sombart	6&5
Roberts	def	Eaton	5&4
Summers	def	Wilson	1 up (20)
Nelson	def	Dodson	2 up
Jenkins	def	Courtney	7&6
C.R. Jones	def	E.H. Jones	4&2
Nugent	def	Nace	2&1

Goodlett	def	Barbee	5&3
Shaufler	def	Hall	2&1
Morrison	def	Lakenan jr	6&5
Hodge	def	Forrest	3&2

Towner	def	Harrelson	3&2
Cruit	def	Dean	1 up (19)
Graham	def	Miller	2 up
Cundiff	def	Ross	3&2

#### 2nd Round

Conley	def	Morrison	1 up (19)
Ecklund	def	Hodge	1 up
Summers	def	Roberts	5&4
Nelson	def	Jenkins	3&2
C.R. Jones	def	Shaufler	2&1
Towner	def	Goodlett	3&2
Nugent	def	Cruit	default
Graham	def	Cundiff	3&2

#### Quarterfinals

Ecklund	def	Conley	5&4
Nelson	def	Summers	1 up
Jones	def	Towner	1 up
Graham	def	Nugent	2 up

#### Semifinals

Ecklund	def	Nelson	2&1
Jones	def	Graham	1 up

#### Finals

"Rand" Jones	def	Ecklund	5&4
--------------	-----	---------	-----

### 1916

#### Mission Hills

Aug 19 - 25

1	Henry Decker	79
2	G.L. Conley	80
3	Robert W. Hodge	82
	M.B. Nelson	82
	Def.W. Eaton	83
5	Hugh E. Brann	83
6	L.H. Sawyer	84
	James E. Nugent	84
8	Bardford Pittam	85
	Robert F. Lakenan, jr	85
	Dr. G.L. Miller, Blue Hills	85
11	E.S. Jones	86
	Russell Jones	86
	E.R. Morrison	86
	Carl Anderson	86
	M.A. Woodbury	86
16	Def.W. Bovee	88
	E.R. McClelland	88
18	E.H. Jones	89
	J.F. Meade	89
20	C.L. Wells	90

Hoyle Jones	90	
22	C.A. Dayton	91
	W.A.R. Summers	91
	W.R.B. Miller	91
	Robert Cruit	91
26	J.E. Turner	93
	W.P. Neff	93
	V.H. Primm	93
29	Thomas Reynolds	94
	C.A. Campbell	94
31	E.P. Ross	95
	E.M. Howe	95

#### 1st Round

Brann	def	Wells	6&5
Eaton	def	Cruit	5&4
Hodge	def	Hoyle Jones	5&4
Bovee	def	Howe	1 up
Anderson	def	Campbell	7&6
Ross	def	E.S. Jones	1 up (19)
Reynolds	def	Woodbury	1 up
W.R.B. Miller	def	Sawyer	default

Russell Jones	def	Turner	6&5
Decker	def	McClelland	5&3
Dayton	def	Pittam	6&4
Nugent	def	Summers	4&3
Neff	def	Dr. G.L. Miller	3&2
Nelson	def	Meade	5&4
E.H. Jones	def	Conley	default
Lakenan	def	Primm	5&4

#### 2nd Round

Decker	def	Dayton	7&6
Nugent	def	Ross	2&1
Anderson	def	Brann	6&5
Neff	def	Nelson	2&1
Lakenan	def	Jones	3&2
Eaton	def	Reynolds	5&4
Miller	def	Bovee	1 up (21)
Hodge	def	R. Jones	4&3

#### Quarterfinals

Decker	def	Anderson	2 up
Nugent	def	Neff	7&6
Lakenan	def	Eaton	3&1
Hodge	def	Miller	6&4

#### Semifinals

Decker	def	Nugent	2&1
Hodge	def	Lakenan	2&1

#### Finals

Decker	def	Hodge	4&2
--------	-----	-------	-----



HENRY DECKER



Union Station in 1918, welcoming the troops back home



Jess Stuttle  
 Champion 1920, Medalist  
 1922  
 Missouri Amateur  
 Medalist 1922

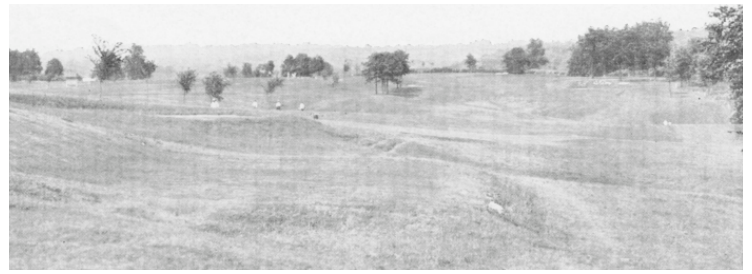
In April of 1917  
 the United States  
 declared war on  
 Germany

<b>1917</b>					
<b>Hillcrest</b>					
Aug 25 - Sept 1					
1	Robert W. Hodge, Blue Hills .....80	24	R.R. Mitchell, Hillcrest.....94	Herndon	def Irwin .....9&8
2	Dr. G.L. Miller, Blue Hills.....85		H.W. Wilson, Milburn.....94	Heryer	def Jones .....5&4
3	Henry Decker, Swope Park.....86		Homer Irwin, Swope Park .....94	<b>2nd Round</b>	
	L.V. Graham, Blue Hills .....86		J.C. Hatler, Hillcrest .....94	Hodge	def E. Sackman.....5&3
	J.A. Roberts, Blue Hills .....86	28	J.N. Guest, Hillcrest .....95	Nugent	def Smith .....1 up
	James E. Nugent, Hillcrest.....86		Carl Wells, Milburn .....95	Wells	def Brown .....3&1
7	Def.W. Eaton, Hillcrest .....87		Herbert Jones, KCCC .....95	Decker	def Wilson .....3&2
	M.B. Nelson, Mission Hills .....87		C.R. Lambert, Milburn .....95	Dr. Miller	def Herndon .....5&4
9	Charles Herndon, Hillcrest .....88		W.A.R. Summers, Milburn .....95	Eaton	def Morrison .....1 up
	Everett Sackman, Swope Park .....88	<b>1st Round</b>		McClelland	def Woodbury .....7&5
11	M.A. Woodbury, Swope Park .....89	Hodge	def Jones .....1 up (19)	Heryer	def Graham .....default
	Russell Jones, Blue Hills .....89	Nugent	def Crowell .....2&1	<b>Quarterfinals</b>	
13	J. DeK. Towner, Mission Hills.....90	Wells	def Towner .....4&3	Eaton	def McClelland 1 up (20)
	F.W. Heryer, Mission Hills .....90	Dr. Miller	def Barbee.....6&5	Hodge	def Nugent .....1 up
	C.Def. Smith, KCCC .....90	Graham	def Hewlett .....3&2	Decker	def Wells .....2&1
16	E.H. Jones, Blue Hills .....91	Eaton	def Mitchell .....2&1	Dr. Miller	def Heryer.....3&1
	H.U. Darling, Swope Park .....91	Morrison	def Lambert .....2&1	<b>Semifinals</b>	
	E.R. Morrison, Blue Hills .....91	Woodbury	def Summers.....4&3	Dr. Miller	def Eaton.....1 up
	P.C. Barbee, Hillcrest.....91			Decker	def Hodge .....2&1
	E.R. McClelland, Blue Hills .....91	McClelland	def Roberts .....3&2	<b>Finals</b>	
21	H.H. Crowell, Swope Park .....92	C.Def. Smith	def Guest.....7&6	Dr. Miller	def Decker .....3&2
22	J.Def. Brown, Hillcrest .....93	Wilson	def Russell Jones .....1 up	<b>1918</b>	
		Decker	def Darling .....4&3	No Tournament due to World War I	
		E. Sackman	def Hatler .....6&4		
		Brown	def Nelson.....1 up		





On the right:  
Ray Ouimet  
Champion 1921, 1922  
Medalist 1920, 1921  
Missouri Amateur  
Runner-up & Medalist  
1921



Hillcrest #3  
in 1923, six years after the club opened.

Grand Avenue  
Kansas City  
1921



on the left:  
Hugh Brann  
Runner-up 1922  
Missouri Amateur  
Runner-up 1909, 1919

**1921**

Hillcrest, Par 73  
August 22 - 27

- 1 Ray Ouimet, Hillcrest ..... 39-39 - 78
- 2 Henry Decker, Swope Park ..... 39-40 - 79
- Ray E. Watson, Blue Hills ..... 42-37 - 79
- 4 Oscar S. Anderson, Swope Park 41-39 - 80
- 5 Jess C. Stuttle, Milburn ..... 41-41 - 82
- James C. Ward, KCCC ..... 40-42 - 82
- 7 James E. Nugent, Hillcrest ..... 41-42 - 83
- E.R. Alexander, Blue Hills ..... 43-40 - 83
- 9 M.A. Woodbury, Meadow Lake 41-43 - 84
- A. Holtman, Hillcrest ..... 41-43 - 84
- 11 C.K. Boardman, Blue Hills ..... 43-43 - 86
- A. Schooley ..... 42-44 - 86
- Lue Shonnard, Blue Hills ..... 47-39 - 86
- Ralph Sackman, Milburn ..... 43-43 - 86
- 15 Everett Sackman, Swope Park ... 44-43 - 87
- John Ehrke, Swope Park ..... 47-40 - 87
- E.C. Welsh, Meadow Lake ..... 42-45 - 87
- 18 A.M. Tousley, Swope Park ..... 48-40 - 88
- C.A. Nichols, Swope Park ..... 45-43 - 88
- H.G. Sternberg, Community Club 45-43 - 88
- 21 H.C. Alley, Hillcrest ..... 45-44 - 89
- M.R. Smith, Hillcrest ..... 48-41 - 89
- John Fennelly, KCCC ..... 48-41 - 89
- 24 V.S. Ferguson, Hillcrest ..... 48-42 - 90
- S.C. Hartshorn, Meadow Lake .. 44-46 - 90
- F.E. Wilson, Swope Park ..... 46-44 - 90
- 27 Luther Creason, Meadow Lake.. 47-44 - 91
- A.D. Bonnifield, Meadow Lake. 45-46 - 91
- W.R. B. Miller, Meadow Lake... 46-45 - 91
- David Thornton, Blue Hills ..... 46-45 - 91
- E.R. McClelland, Mission Hills. 49-42 - 91
- J.M. Freeland, KCCC ..... 47-44 - 91

**1st Round**

- Ouimet def Ehrke ..... 3&1
- Miller def Shonnard ..... default
- Stuttle def Fennelly ..... 5&4
- Welsh def Creason ..... 1 up
- Woodbury def Hartshorn ..... 6&5
- Nugent def M.R. Smith ..... 7&6
- R. Sackman def McClelland ..... 3&2
- Watson def Nichols ..... 4&3

- Sternberg def Decker ..... 4&3
- Boonifield def Boardman ..... 2&1
- Ward def Alley ..... 3&2
- E. Sackman def Thornton ..... default
- Wilson def Holtman ..... 1 up
- Alexander def Ferguson ..... 5&4
- Freeland def Schooley ..... default
- Anderson def Tousley ..... 7&6

**2nd Round**

- Ouimet def Miller ..... 7&6
- Stuttle def Welsh ..... 5&4
- Woodbury def Nugent ..... 4&3
- R. Sackman def Watson ..... 6&5
- Sternberg def Bonnifield ... 1 up (20)
- E. Sackman def Ward ..... 1 up
- Alexander def Wilson ..... 6&5
- Anderson def Freeland ..... 5&4

**Quarterfinals**

- Ouimet def Stuttle ..... 6&5
- R. Sackman def Woodbury ..... 2 up
- Sternberg def E. Sackman ..... 3&1
- Alexander def Anderson ..... 3&2

**Semifinals**

- Ouimet def R. Sackman ..... 1 up
- Alexander def Sternberg ..... 2&1

**Finals**

- Ouimet def Alexander ..... 8&7

**1922**

Kansas City CC, Par 71  
August 28-Sept 2

- 1 Jess Stuttle, Milburn ..... 37-37 - 74
- 2 Walter Wilson, Milburn ..... 37-39 - 76
- Ray Ouimet, Community Club .. 39-37 - 76
- W.S. Bucher, Meadow Lake ..... 38-38 - 76
- John Ehrke, Lakewood ..... 37-39 - 76
- Hugh Brann, Hillcrest ..... 36-40 - 76
- E.R. McClelland, Mission Hills. 38-38 - 76
- 8 Hoyle Jones, KCCC ..... 38-39 - 77
- Price Wickersham, Blue Hills ... 38-39 - 77
- Robert W. Hodge, Mission Hills 37-40 - 77
- H.V. Moore, KCCC ..... 39-38 - 77

- 12 R.M. Jackson, Swope Park ..... 40-38 - 78
- J.E. Nugent, Mission Hills ..... 37-41 - 78
- H.G. Fowler, Blue Hills ..... 40-38 - 78
- M. Polenske, Community Club . 41-37 - 78
- Frank Aylward, Swope Park ..... 39-39 - 78
- K.W. Kinnard, KCCC ..... 39-39 - 78
- W.W. Cloughley, Milburn ..... 39-39 - 78
- J.H. Munro, Milburn ..... 38-40 - 78
- 20 Maurice Smith, Hillcrest ..... 39-40 - 79
- C.E. Thayer, Meadow Lake ..... 37-42 - 79
- M.B. Nelson, Mission Hills ..... 38-41 - 79
- R.H. Ford, Swope Park ..... 41-38 - 79
- Gordon Davis, Blue Hills ..... 40-39 - 79
- 25 S.B. Sebree, KCCC ..... 42-38 - 80
- W.J. Burchichter, Lakewood ..... 41-39 - 80
- J.E. Cool, Blue Hills ..... 39-41 - 80
- P.V. Hummel, Lakewood ..... 40-40 - 80
- Herb Sloan, Blue Hills ..... 40-40 - 80
- Charles Nichols, Swope Park .... 41-39 - 80
- J.S. Logan, KCCC ..... 43-37 - 80
- S.S. Lindley, Swope Park ..... 39-41 - 80

**1st Round**

(results not published in newspapers)

**2nd Round**

- Stuttle def Hodge ..... 3&1
- R.M. Jackson def Ted Smith ..... 1 up
- F. Aylward def Walter Wilson 1 up (20)
- Ouimet def Hummel ..... 6&5
- Wickersham def Bucher ..... 1 up (22)
- McClelland def Nichols ..... 1 up
- Nelson def Logan ..... 2 up
- Brann def Kinnard ..... 2 & 1

**Quarterfinals**

- Ouimet def Aylward ..... 6&5
- Wickersham def McClelland ..... 6&5
- Stuttle def R.M. Jackson ..... 1 up
- Brann def Nelson ..... 5&4

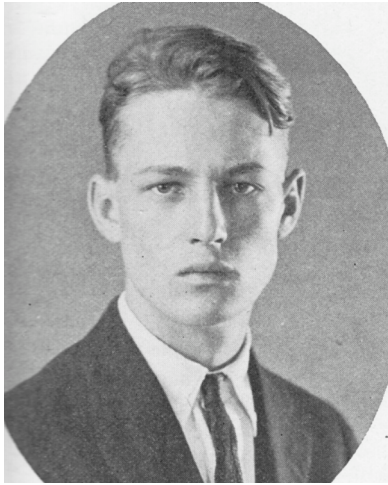
**Semifinals**

- Ouimet def Stuttle ..... 4&3
- Brann def Wickersham ..... 1 up

**Finals**

- Ouimet def Brann ..... 10&9





Roland Ford & Jack Cannon  
all-Milburn final 1925

Roland Ford  
Champion 1925, 1926



Milburn # 18 & clubhouse



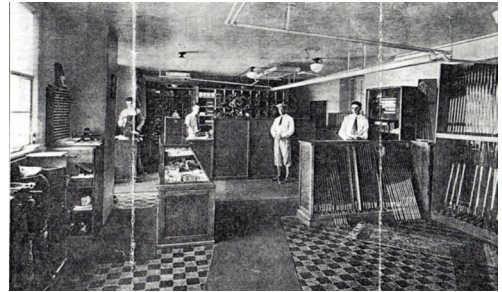
Milburn # 5 (from #16 tee)



Milburn # 12



Milburn # 13



Milburn pro shop

**1925**

Milburn, Par 72  
July 20 - 25

1	Bill Bucher, Meadow Lake .....	36-36 - 72
2	Roland Ford, jr, Milburn .....	37-37 - 74
	E.F. Laed, Hillcrest .....	37-37 - 74
	J.J. Lynn, Mission Hills .....	36-38 - 74
	Harold Wilson, Swope Park .....	38-36 - 74
	Herbert Patt, Mission Hills .....	39-35 - 74
7	Verne Schofield, Swope Park .....	38-37 - 75
	Martin Stein, Oakwood .....	36-39 - 75
9	C.W. Schofield, Swope Park .....	38-38 - 76
	H.F. Bagby, Mission Hills .....	37-39 - 76
	John Ehrke, Swope Park .....	38-38 - 76
12	James Blakeney, Milburn .....	40-37 - 77
	Tim Dunn, Meadow Lake .....	37-40 - 77
	Dr. P.J. O'Connell, Milburn .....	38-39 - 77
	Earl Rowe, Milburn .....	39-38 - 77
	Maurice Smith, Indian Hills .....	39-38 - 77
	George Storm, Hillcrest .....	39-38 - 77
	Price Wickersham, Blue Hills .....	39-38 - 77
19	Carey Ballew, jr, Meadow Lake .....	39-39 - 78
	Morton Benedict, Swope Park .....	40-38 - 78
	L.G. Trickett, Milburn .....	41-37 - 78

	George Wheat, Milburn .....	40-38 - 78
23	Robert W. Hodge, Mission Hills .....	41-38 - 79
	Charles Herndon, Hillcrest .....	41-38 - 79
	Walter Wilson, Milburn .....	39-40 - 79
	Frank Aylward, Swope Park .....	38-41 - 79
	W.R. B. Miller, Meadow Lake .....	40-39 - 79
	Jack Cannon, Milburn .....	38-41 - 79
29	Harold Gosnell, Milburn .....	40-40 - 80
	W.W. Cloughley, Milburn .....	40-40 - 80
	Jimmy Norberg, Mission Hills .....	40-40 - 80
	Earl Smith, Hillcrest .....	41-39 - 80

**1st Round**

Storm	def	Bucher .....	1 up (21)
Wheat	def	Laed .....	2&1
Cannon	def	Bagby .....	3&2
Gosnell	def	Rowe .....	4&3
Wickersham	def	Cloughley .....	2 up
Hodge	def	Ehrke .....	3&2
Herndon	def	Stein .....	1 up (20)
Wilson	def	Benedict .....	1 up
Maurice Smith	def	Patt .....	1 up
Lynn	def	Trickett .....	1 up (20)
Schofield	def	Miller .....	1 up (20)

Dunn	def	Norberg .....	2&1
O'Connell	def	Earl Smith .....	5&4
Wilson	def	Blakeney .....	4&3
Aylward	def	Schofield .....	1 up
Ford	def	Ballew .....	4&2

**2nd Round**

George Wheat	def	Storm .....	2&1
Cannon	def	Gosnell .....	2&1
Wickersham	def	Hodge .....	4&3
Harold Wilson	def	Herndon .....	1 up
Maurice Smith	def	Lynn .....	3&2
Dunn	def	Schofield .....	7&6
Walter Wilson	def	O'Connell .....	4&3
Ford	def	Aylward .....	2&1

**Quarterfinals**

Cannon	def	George Wheat .....	3&2
Wickersham	def	Harold Wilson .....	3&2
Maurice Smith	def	Dunn .....	5&4
Ford	def	Walter Wilson .....	

**Semifinals**

Cannon	def	Wickersham .....	1 up
Ford	def	Maurice Smith .....	3&2

**Finals**

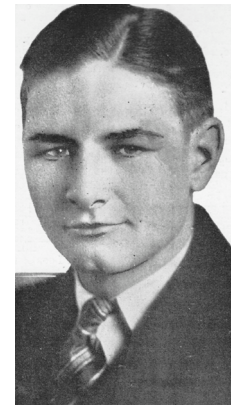
Ford	def	Cannon .....	1 up (19)
------	-----	--------------	-----------



Claiborne Ford, 1927  
Missouri Amateur Medalist 1932



Mission Hills clubhouse, #9 & 18 greens. Stateline Road is in between and Ward Parkway is at the top of the photo.



Jug McSpadden  
Medalist 1926

<b>1926</b>					
Mission Hills, Par 72					
July 26 -31					
1	Harold "Jug" McSpadden, Lakewood ....	72			
2	George Wheat, Milburn .....	74			
	Carey Ballew, Meadow Lake .....	74			
4	Norton Benedict, Lakewood .....	75			
	Roland Ford, Milburn .....	75			
	G.E. Martin, Hillcrest .....	75			
	Bunn Patt, Mission Hills .....	75			
8	Cleo Schofield, Swope Park .....	76			
	E.C. Welch, Meadow Lake .....	76			
	Vern Schofield, Swope Park .....	76			
	Claiborn Ford, Milburn .....	76			
	Roy Peterson, Swope Park .....	76			
	Charles Herndon, Hillcrest .....	76			
14	G.F. Baltis, Milburn .....	77			
	E.P. Wheat, jr, Blue Hills .....	77			
	Jack Cooper, jr, Meadow Lake .....	77			
	Bob Savage, Milburn .....	77			
	Paul Jackson, Eastwood Hills .....	77			
	J.E. Nugent, Mission Hills .....	77			
20	Floyd Smith, Milburn .....	78			
	George Balten, Ivanhoe .....	78			
	John Ehrke, Swope Park .....	78			
	Ed Guettel, Oakwood .....	78			
24	O.C. Tosh, Milburn .....	79			
	Price Wickersham, Blue Hills .....	79			
	W.G. Bucher, Meadow Lake .....	79			
	H.J. Ellfeldt, Lakewood .....	79			
	Def.M. Harwood, Hillcrest .....	79			
29	Walter Wilson, Milburn .....	80			
	H.E. Ragland, Lakewood .....	80			
	A.E. W. Miller, Lakewood .....	80			
	J.J. Lynn, Blue Hills .....	80			
<b>1st Round</b>					
McSpadden	def	Baltis .....	6&4		
Bucher	def	Schofield .....	1 up		
Floyd Smith	def	M. Benedict .	1 up (20)		
Welsh	def	Ellfeldt .....	3&2		
Roland Ford	def	Balten .....	4&3		
Wilson	def	E.P. Wheat ...	1 up (22)		
Schofield	def	Tosh .....	1 up		
Ballew	def	Cooper .....	7&5		
George Wheat	def	Savage .....	2 up		
Wickersham	def	Claiborn Ford .....	2 up		
Martin	def	Ehrke .....	5&3		
Ragland	def	Miller .....	6&5		
Guettel	def	Peterson .....	4&3		
Lynn	def	Jackson .....	5&4		
Herndon	def	Harwood .....	7&5		
Nugent	def	Patt .....	5&4		
<b>2nd Round</b>					
McSpadden	def	Bucher .....	2&1		
Smith	def	Welsh .....	3&2		
Roland Ford	def	Wilson .....	6&5		
Ballew	def	Schofield .....	7&6		
Wickersham	def	George Wheat .....	1 up		
Ragland	def	Martin .....	2&1		
Guettel	def	Lynn .....	2 up		
Nugent	def	Herndon .....	4&3		
<b>Quarterfinals</b>					
McSpadden	def	Smith .....	7&6		
Roland Ford	def	Ballew .....	2 up		
Ragland	def	Wickersham .....	4&3		
Guettel	def	Nugent .....	1 up		
<b>Semifinals</b>					
Roland Ford	def	McSpadden..	1 up (19)		
Ragland	def	Guettel .....	2&1		
<b>Finals</b>					
Roland Ford	def	Ragland .....	11&10		
<b>1927</b>					
Oakwood, Par 73					
July 10 -15					
1	Paul Jackson, Swope Park .....	35-35	- 70		
2	Morton Benedict, Lakewood .....	37-34	- 71		
3	Milo Seiglar, Swope Park .....	34-39	- 73		
	H.R.'Monk' Wilson, Swope Park .....	35-38	- 73		
5	Ed Guettel, Oakwood .....	37-37	- 74		
6	Claiborn Ford, Milburn .....	37-38	- 75		
7	Tim Dunn, Hillcrest .....	38-38	- 76		
	Earl Rowe, Milburn .....	37-39	- 76		
	Maurice R. Smith, Indian Hills .....	38-38	- 76		
	Eli P. Wheat, jr, Blue Hills .....	40-36	- 76		
	George Wheat, Milburn .....	40-36	- 76		
12	Hal Whitney, Swope Park .....	37-40	- 77		
13	Frank Alff, Swope Park .....	38-40	- 78		
	Carey Ballew, jr, Meadow Lake .....	40-38	- 78		
	O.L. Borgquist, Milburn .....	39-39	- 78		
	R.L. Savage, Swope Park .....	38-40	- 78		
	M. Dunlap, Swope Park .....	39-39	- 78		
	Cleo Schofield, Swope Park .....	40-38	- 78		
19	J.J. Lynn, Mission Hills .....	42-37	- 79		
	W.A. Weaver, Mission Hills .....	42-37	- 79		
Gordon Baltis, Ivanhoe .....		40-39	- 79		
C.M. Howe, Blue Hills .....		39-40	- 79		
L.H. Palis, Swope Park .....		41-38	- 79		
Verne Scofield, Swope Park .....		38-41	- 79		
25	Art Beck, Indian Hills .....	38-42	- 80		
	H.P. Morley, Meadow Lake .....	42-38	- 80		
	Howard Ellfeldt, Milburn .....	42-38	- 80		
	Allan Staller, Swope Park .....	37-43	- 80		
	Hal F. Bagby, Mission Hills .....	40-40	- 80		
	James Norberg, Mission Hills .....	39-41	- 80		
	Milton Goldstandt, Ivanhoe .....	40-40	- 80		
	E.A. Weishaar, Lakewood .....	42-38	- 80		
<b>1st Round</b>					
Jackson	def	Dunlap .....	6&4		
Savage	def	Morley .....	5&4		
Guettel	def	Weaver .....	3&1		
Maurice Smith	def	Weishaar .....	3&1		
Ballew	def	Beck .....	1 up (22)		
George Wheat	def	Ellfeldt .....	1 up (19)		
Rowe	def	Baltis .....	4&3		
Wilson	def	Howe .....	7&5		
Benedict	def	Scofield .....	6&4		
C. Ford	def	Palis .....	2 up		
Eli Wheat	def	Staller .....	6&4		
Bagby	def	Borgquist .....	3&1		
Alff	def	Goldstandt .....	5&4		
Norberg	def	Whitney .....	2&1		
Dunn	def	Lynn .....	2&1		
Schofield	def	Seiglar .....	7&5		
<b>2nd Round</b>					
Jackson	def	Guettel .....	3&2		
Ballew	def	Maurice Smith .....	6&4		
George Wheat	def	Savage .....	1 up		
Rowe	def	Wilson .....	3&1		
Ford	def	Benedict .....	2&1		
Bagby	def	Eli Wheat .....	1 up (19)		
Alff	def	Norberg .....	4&3		
Dunn	def	Schofield .....	6&4		
<b>Quarterfinals</b>					
Jackson	def	Ballew .....	1 up (20)		
George Wheat	def	Rowe .....	1 up (19)		
C. Ford	def	Bagby .....	4&2		
Alff	def	Dunn .....	5&3		
<b>Semifinals</b>					
Jackson	def	George Wheat .....	2&1		
Alff	def	C. Ford .....	1 up (19)		
<b>Finals</b>					
Jackson	def	Alff .....	4&3		



Main & Pershing  
by Union Station 1928



Swope Park Hole #3 in 1928  
Now this is #9, with the hole playing in the  
opposite direction.

The Kansas City CC clubhouse  
was razed on April 16, 1928. Mrs.  
Loose forbade golf to be played on the  
80 acre property. Loose Park was thus  
converted from a golf course to a city  
park.



Maurice R. Smith  
Semifinalist 1925, 1929



Paul Jackson & Frank Alff  
Champion & Runner-up 1927



Paul Jackson, Swope Park  
Champion 1927, 1928  
Medalist 1927, 1932

**1928**

Swope Park, Par 70  
July 9 - 14

The tournament was marred by the disqualification of thirteen golfers who were not members of any KCGA club. Noah Van Bibber shot a 66, but was one of the ineligible.

1 Earl Rowe, Milburn .....	34-36 - 70	Roy Peterson, Swope Park .....	35-35 - 70	3 Frank Aylward, Swope Park .....	38-34 - 72	Maurice Smith, Indian Hills .....	36-36 - 72	Marvin Daily, Swope Park .....	36-36 - 72	Grable Duvall, jr, Lakewood .....	35-37 - 72	Frank Alff, jr, Meadow Lake .....	36-36 - 72	8 Tim Dunn, Hillcrest .....	38-35 - 73	M.R. Collins, Lakewood .....	37-36 - 73	Floyd Hoss, Swope Park .....	36-37 - 73	Cleo Schofield, Swope Park .....	38-35 - 73	G.L. Weaver, Mission Hills .....	37-36 - 73	13 Carey Ballew, jr, Meadow Lake .....	38-36 - 74	Jack Meredith, Meadow Lake .....	38-36 - 74	E.W. Cochrane, Hillcrest .....	37-37 - 74	16 William Hornbuckle, Lakewood .....	39-36 - 75	R.R. Frecheville, Blue Hills .....	36-39 - 75	Ed Guettel, Oakwood .....	36-39 - 75	Art Beck, Indian Hills .....	40-35 - 75	L.R. Sutlin, Oakwood .....	37-38 - 75	Allan Staller, Swope Park .....	36-39 - 75	Kenneth Sandy, Swope Park .....	37-38 - 75	Paul Jackson, Swope Park .....	36-39 - 75	24 O.L. Borgquist, Milburn .....	36-40 - 76	Charles Bombeck, Swope Park .....	39-37 - 76	Mel Smith, Swope Park .....	38-38 - 76	J.H. "Hap" Goodwin, KCCC .....	38-38 - 76	James Fox, Swope Park .....	37-39 - 76	Morton Benedict, Lakewood .....	39-37 - 76	H.R. Wilson, Swope Park .....	38-38 - 76	J.L. Norberg, Mission Hills .....	37-39 - 76	L.H. Palis, Swope Park .....	35-41 - 76	Staller	def	Rowe .....	1 up (19)	Maurice Smith	def	Sandy .....	3&2	Bombeck	def	Cochrane .....	1 up	Jackson	def	Borgquist .....	6&4	Frecheville	def	Daily .....	2&1	Mel Smith	def	Dunn .....	3&2	Goodwin	def	Collins .....	3&2	Guettel	def	Duvall .....	1 up	Beck	def	Peterson .....	1 up	Hoff	def	Sutlin .....	1 up	Scofield	def	Fox .....	5&4	Benedict	def	Alff .....	3&2	Ballew	def	Wilson .....	2&1	Norberg	def	Meredith .....	5&3	Palis	def	Weaver .....	4&3	Aylward	def	Hornbuckle ..	1 up (19)	<b>2nd Round</b>	Maurice Smith	def	Staller .....	2&1	Jackson	def	Bombeck .....	5&4	Mel Smith	def	Frecheville .....	6&5	Guettel	def	Goodwin .....	2&1	Beck	def	Hoff .....	3&2	Benedict	def	Scofield .....	2&1	Ballew	def	Norberg .....	2&1	Aylward	def	Palis .....	4&3	<b>Quarterfinals</b>	Jackson	def	Maurice Smith .....	4&3	Guettel	def	Mel Smith .....	2&1	Benedict	def	Beck .....	1 up (19)	Aylward	def	Ballew .....	1 up	<b>Semifinals</b>	Jackson	def	Guettel .....	5&4	Aylward	def	Benedict .....	1 up	<b>Finals</b>	Jackson	def	Aylward .....	5&3
----------------------------	------------	--------------------------------	------------	-----------------------------------	------------	-----------------------------------	------------	--------------------------------	------------	-----------------------------------	------------	-----------------------------------	------------	-----------------------------	------------	------------------------------	------------	------------------------------	------------	----------------------------------	------------	----------------------------------	------------	--	------------	----------------------------------	------------	--------------------------------	------------	---------------------------------------	------------	------------------------------------	------------	---------------------------	------------	------------------------------	------------	----------------------------	------------	---------------------------------	------------	---------------------------------	------------	--------------------------------	------------	----------------------------------	------------	-----------------------------------	------------	-----------------------------	------------	--------------------------------	------------	-----------------------------	------------	---------------------------------	------------	-------------------------------	------------	-----------------------------------	------------	------------------------------	------------	---------	-----	------------	-----------	---------------	-----	-------------	-----	---------	-----	----------------	------	---------	-----	-----------------	-----	-------------	-----	-------------	-----	-----------	-----	------------	-----	---------	-----	---------------	-----	---------	-----	--------------	------	------	-----	----------------	------	------	-----	--------------	------	----------	-----	-----------	-----	----------	-----	------------	-----	--------	-----	--------------	-----	---------	-----	----------------	-----	-------	-----	--------------	-----	---------	-----	---------------	-----------	------------------	---------------	-----	---------------	-----	---------	-----	---------------	-----	-----------	-----	-------------------	-----	---------	-----	---------------	-----	------	-----	------------	-----	----------	-----	----------------	-----	--------	-----	---------------	-----	---------	-----	-------------	-----	----------------------	---------	-----	---------------------	-----	---------	-----	-----------------	-----	----------	-----	------------	-----------	---------	-----	--------------	------	-------------------	---------	-----	---------------	-----	---------	-----	----------------	------	---------------	---------	-----	---------------	-----





Morton Benedict  
Champion  
1929



The site of Meadow Lake CC as it appeared in 1955 looking SW. Some outlines of the layout can still be seen fifteen years after it was a golf course. Stateline Road is at the left, 75th Street intersects it.

**1929**

Meadow Lake CC, Par 73  
July 15 - 20

**Junior Division (29 and under)**

- 1 Eddie Guettel, Oakwood..... 37-36 - 73
  - 2 Paul Jackson, Swope Park ..... 36-38 - 74
  - 3 Mike McKinney, Swope Park .... 37-38 - 75
  - Carey Ballew, jr, Meadow Lake 36-39 - 75
  - 5 Mel Smith, Swope Park ..... 38-38 - 76
  - Claude Myers, jr, Meadow Lake 41-35 - 76
  - Allan Staller, Swope Park ..... 38-39 - 77
  - 8 Bill Rust, Mission Hills ..... 38-39 - 77
  - 9 Charles Parker, jr, Meadow Lake 39-39 - 78
  - Morton Benedict, Swope Park ... 40-38 - 78
  - Ted Hofheins, Wood Hill ..... 38-40 - 78
  - J.C. Cartland, Meadow Lake ..... 40-38 - 78
  - Robert L. Savage, Swope Park .. 36-42 - 78
  - 14 Edward Ellfeldt, Swope Park..... 41-38 - 79
  - William Gammon, Wood Hill .... 39-40 - 79
  - Frank Aylward, Swope Park ..... 41-38 - 79
  - 17 H.J. Perin, Wood Hill ..... 41-39 - 80
  - Harry Slayback, Milburn ..... 40-40 - 80
  - John H. "Hap" Goodwin, KCCC 43-37 - 80
  - Wallace Mudge, Swope Park ..... 40-40 - 80
  - Stanley Jackson, Swope Park .... 42-38 - 80
  - E.H. Smith, Wood Hill ..... 38-42 - 80
  - 23 Cheny Prouty, Milburn ..... 40-41 - 81
  - John Cook, Indian Hills ..... 39-42 - 81
  - Claiborn Ford, Milburn ..... 42-39 - 81
  - 26 Noah Van Bibber, Ivanhoe ..... 42-40 - 82
  - Hovie Lovejoy, KCCC ..... 43-39 - 82
  - Les Lovelace, Milburn ..... 41-41 - 82
  - Emery Gammon, Swope Park.... 42-40 - 82
  - Gordon Baltis, Swope Park..... 41-41 - 82
  - Dean Beebe, Meadow Lake ..... 41-41 - 82
  - 32 Kendall Mayor, Meadow Lake .. 41-42 - 83
- Senior Division (30 and over)**
- 1 Frank English, Milburn..... 36-39 - 75
  - 2 Def.M. Harwood, Hillcrest ..... 38-38 - 76
  - A.E.W. Miller, Indian Hills ..... 39-37 - 76
  - Robt. M. Burt, Wood Hill ..... 38-38 - 76
  - 5 Jack Cannon, Milburn..... 38-39 - 77
  - Jim Greenwood, Meadow Lake . 38-39 - 77
  - 7 Ralph West, Milburn ..... 40-39 - 79
  - Charles Aylward, Swope Park ... 41-38 - 79
  - E.C. Welsh, Blue Hills ..... 41-38 - 79
  - Verne Scofield, Swope Park..... 41-38 - 79
  - Bill Hornbuckle, Wood Hill ..... 40-39 - 79
  - E.M. Lynn, Mission Hills ..... 41-38 - 79
  - 13 E.E. Seymour, Wood Hill..... 40-40 - 80

- Maurice Smith, Indian Hills ..... 40-40 - 80
- Charles Young, Wood Hill ..... 39-41 - 80
- L.C. Tosh, Milburn ..... 38-42 - 80
- James Nugent, Mission Hills ..... 40-40 - 80
- 18 Carl Smith, Meadow Lake ..... 41-40 - 81
- R.V. Aycock, Mission Hills ..... 40-41 - 81
- Cleo Schofield, Swope Park ..... 42-39 - 81
- J.R. Flynn, Blue Hills ..... 41-40 - 81
- 22 H. Tuffts, Swope Park ..... 40-42 - 82
- E.A. Weishaar, Indian Hills ..... 38-44 - 82
- E.C. Lorton, Motor CC ..... 42-40 - 82
- H.C. Gosnell, Milburn ..... 44-38 - 82
- 26 Edward Cochrane, Hillcrest ..... 42-41 - 83
- W.B. Mann, Mission Hills ..... 40-43 - 83
- Wylie T. Williamson, Swope Pk 45-38 - 83
- 29 G.E. Martin, Hillcrest ..... 42-41 - 83
- 30 A.E. Talbot, Ivanhoe ..... 45-39 - 84
- Charles Herndon, Blue Hills ..... 45-39 - 84
- G.L. Peterson, Hillcrest ..... 41-43 - 84

**Junior Division (29 and under)**

**1st Round**

- Guettel def Perrin ..... 2&1
- Cortland def Van Bibber ..... 3&2
- Goodwin def McKenny ..... 3&2
- Paul Jackson def Slayback ..... 2&1
- Rust def Prouty ..... 5&3
- Parker def Lovejoy ..... 3&1
- Ballew def Mudge ..... 5&4
- Stanley Jackson def Myers ..... 1 up (21)

**2nd Round**

- Benedict def Guettel ..... 3&2
- Stanley Jackson def Wm Gammon ..... 7&6
- Rust def Savage ..... 2&1
- Parker def Goodwin ..... 3&2
- Paul Jackson def Cartland ..... 4&3
- Frank Aylward def E.H. Smith ... 1 up (19)
- Staller def Ellfeldt ..... 5&4
- Ballew def Hofheins ..... 7&6

**Quarterfinals**

- Benedict def Stanley Jackson ... 3&2
- Parker def Rust ..... 1 up (20)

- Frank Aylward def Paul Jackson 1 up (22)
- Ballew def Staller ..... 4&2

**Semifinals**

- Frank Aylward def Ballew ..... 1 up
- Benedict def Parker ..... 4&2

**Finals**

- Benedict def Frank Aylward .....

**Senior Division (30 and over)**

**1st Round**

- Tosh def Talbot ..... 2&1
- Herndon def Young ..... 1 up
- Harwood def Carl Smith ..... 1 up
- Wheat def Tuffts ..... 5&4
- Burt def Cleo Schofield ..... 3&1
- Greenwood def Flynn ..... 3&1
- Verne Schofield def Cochrane ..... 1 up
- Maurice Smith def Peterson ..... 5&3

**2nd Round**

- English def Welsh ..... 1 up (19)
- Greenwood def Herndon ..... 5&3
- Martin def Weishaar ..... 7&6
- Mann def Aycock ..... 3&1
- Harwood def Schofield ..... 1 up
- Wheat def Tosh ..... 3&2
- Maurice Smith def Chas Aylward ..... 5&3
- Lynn def Burt ..... 1 up (19)

**Quarterfinals**

- English def Greenwood ..... 5&4
- Martin def Mann ..... 5&3
- Wheat def Harwood ..... 2 up
- Maurice Smith def Lynn ..... 574

**Semifinals**

- Wheat def Maurice Smith ..... 2 up
- English def Martin ..... 2&1

**Finals**

- Wheat def English .....

**1929 City Championship Finals**

- Benedict def Wheat ..... 1 up



Kansas City CC clubhouse, 1929

Bobby Jones won the U.S. Open at Interlachen in July of 1930 and the U.S. Amateur at Merion in September, completing the Grand Slam.



Carey Ballew, jr.  
Champion 1930, 1931,  
1932, 1951  
Runner-up 1935

**1930**

Kansas City CC, Par 70

July 8-13

**Junior Division (29 and under)**

- 1 Carey Ballew, jr, Meadow Lake 39-38 - 77
- Bennie Bogess, Swope Park ..... 39-38 - 77
- Frank Aylward, Milburn ..... 37-40 - 77
- 4 Max Condon, Meadow Lake ..... 38-40 - 78
- William Rust, Mission Hills ..... 41-37 - 78
- 6 Joseph Fennelly, KCCC ..... 40-39 - 79
- Jay Ward, KCCC ..... 40-39 - 79
- Paul Jackson, Swope Park ..... 40-39 - 79
- J.J. Jackson, Jr, Swope Park ..... 41-38 - 79
- Harry Smith, Swope Park ..... 38-41 - 79
- H.P. Wheat, jr, Blue Hills ..... 42-37 - 79
- 12 Ed Guettel, Oakwood ..... 38-42 - 80
- Kendall Mayor, Meadow Lake .. 39-41 - 80
- Robt. L. Savage, Swope Park .... 36-44 - 80
- 15 Roger Mayor, Meadow Lake ..... 39-42 - 81
- Claibourn Ford, Milburn ..... 44-37 - 81
- 17 William Gammon, Swope Park . 41-41 - 82
- William Shaw, South Ridge ..... 43-39 - 82
- J.H. 'Hap' Goodwin, KCCC ..... 40-42 - 82
- 20 Morton Benedict, Swope Park ... 40-43 - 83
- Allan Staller, Swope Park ..... 40-43 - 83
- Mel Smith, Swope Park ..... 43-40 - 83
- 23 John Campbell, Swope Park ..... 43-41 - 84
- Bun Patt, Mission Hills ..... 39-45 - 84
- James Norberg, Mission Hills ... 43-41 - 84
- G.L. Weaver, Mission Hills ..... 42-41 - 84
- Chaney Prouty, jr, Milburn ..... 43-41 - 84
- 28 E.H. Smith, Wood Hill ..... 41-44 - 85
- W.A. Weaver, Mission Hills ..... 42-43 - 85
- A.G. Carter, jr, Wood Hill ..... 40-45 - 85
- 31 Frank E. Aylward, Wood Hill .... 45-41 - 86
- Richard Twyman, Mission Hills 41-45 - 86

**Senior Division (30 and over)**

- 1 Maurice R. Smith, Indian Hills.. 37-39 - 76
- 2 Frank English, Milburn ..... 38-39 - 77
- 3 George Wheat, Milburn ..... 38-41 - 79
- 4 Bob Burtt, Wood Hill ..... 39-42 - 81
- 5 Grable Duvall, jr, Wood Hill ..... 41-41 - 82
- James Nugent, Mission Hills ..... 40-42 - 82
- E.A. Weishaar, Indian Hills ..... 39-43 - 82
- 8 Gordon Davis, Indian Hills ..... 43-40 - 83
- 9 A. Capehart, Swope Park ..... 40-45 - 85
- James Gleeson, jr, Wood Hill .... 42-43 - 85
- George McDonald, Mission Hills 38-47 - 85
- 12 Carl Smith, Meadow Lake ..... 40-46 - 86
- Walter Wilson, Milburn ..... 44-42 - 86

- E.W. Cochrane, Blue Hills ..... 47-39 - 86
- H.J. Ellfeldt, Swope Park ..... 43-43 - 86
- 16 L.B. Andrews, Wood Hill ..... 45-42 - 87
- E.R. Slater, Milburn ..... 44-43 - 87
- Charles Aylward, Swope Park ... 43-44 - 87
- W.W. Scott, Swope Park ..... 42-45 - 87
- A.E. Grigsby, Milburn ..... 42-45 - 87
- 21 G.W. Weston, Milburn ..... 42-46 - 88
- Frank Paxton, KCCC ..... 43-45 - 88
- H.C. Gosner, Milburn ..... 42-46 - 88
- G.W. Miller, Milburn ..... 46-42 - 88
- John Youst, Milburn ..... 43-45 - 88
- 26 David G. Logan, KCCC ..... 43-46 - 89
- 27 C.O. Lane, Ivanhoe ..... 44-46 - 90
- Clarence Sundahl, Meadow Lake 47-43 - 90
- 29 Milton Goldstandt, Swope Park. 48-43 - 91
- Jack Cannon, South Ridge ..... 47-44 - 91
- Karl Schroer, Milburn ..... 45-46 - 91
- George Aylward, Swope Park .... 45-46 - 91

**Junior Division (29 and under)**

**1st Round**

- Ballew def Gammon ..... 3&2
- Paul Jackson def Prouty ..... 7&5
- Benedict def Kendall Mayor ..... 2&1
- Bogess def Shaw ..... 2&1
- Norberg def J.J. Jackson ..... 7&6
- Roger Mayor def J.E. Aylward ..... 6&5
- Savage def E.H. Smith ..... 2 up
- Twyman def Fennelly ..... 4&3

- Mel Smith def Condon ..... 1 up
- Harry Smith def G.L. Weaver ..... 3&2
- Goodwin def Frank Aylward ..... 1 up
- Campbell def Ward ..... 4&2
- Carter def C. Ford ..... 3&2
- Guettel def W.A. Weaver ..... default
- Staller def Rust ..... 2&1

**2nd Round**

- Wheat def Bogess ..... 1 up
- Benedict def Guettel ..... 1 up
- Harry Smith def A.G. Carter ..... 4&2
- Paul Jackson def Goodwin ..... 1 up
- Ballew def Norberg ..... 5&3
- Savage def Staller ..... 1 up (21)
- Campbell def Roger Mayor ..... 3&2
- Mel Smith def Twyman ..... 3&1

**Quarterfinals**

- Benedict def Wheat ..... 1 up
- Paul Jackson def Harry Smith ..... 4&3

- Ballew def Savage ..... 4&3
- Mel Smith def Campbell ..... 5&3
- Semifinals**
- Jackson def Benedict ..... 2&1
- Ballew def Mel Smith ..... 5&3
- Finals**
- Ballew def Jackson ..... 5&4

**Senior Division (30 and over)**

**1st Round**

- Maurice Smith def Slater ..... 7&6
- McDonald def Lane ..... 1 up
- Goldstandt def Cochrane ..... 3&2
- Davis def Youst ..... 1 up
- Miller def Carl Smith ..... 3&1
- Wilson def Cannon ..... default
- Capehart def Logan ..... 1 up
- Gleeson def Sundahl ..... 5&3

- Wheat def Grigsby ..... 4&3
- English def Andrew ..... 5&4
- Chas Aylward def George Aylward ... 4&3
- Ellfeldt def Schroer ..... 2&1
- Burtt def Scott ..... 3&1
- Paxton def Duvall ..... 1 up (19)
- Nugent def Gosner ..... 9&7
- Weston def Weishaar ..... 1 up

**2nd Round**

- Maurice Smith def Capehart ..... 5&3
- Nugent def Wilson ..... 1 up
- Ellfeldt def Paxton ..... 3&1
- Wheat def Gleeson ..... 7&6
- English def McDonald ..... 3&2
- Weston def Goldstandt ... 1 up (19)
- Chas Aylward def Davis ..... default
- Miller def Burtt ..... 2&1

**Quarterfinals**

- Ellfeldt def Wheat ..... 2 up
- Nugent def Maurice Smith ..... 2 up
- English def Weston ..... 4&2
- Chas Aylward def Miller ..... 3&2

**Semifinals**

- English def Chas Aylward ..... 3&1
- Nugent def Ellfeldt ..... 372

**Finals**

- English def Nugent ..... 11&9

**1930 City Championship Finals**

- Ballew def English ..... 5&3



Carey Ballew, jr.  
Champion 1930, 1931, 1932, 1951  
Runner-up 1935



Mission Hills layout  
prior to 1956



**1931**

Mission Hills CC, Par 72

July 13-19

**Junior Division (29 and under)**

- 1 Kendall Mayor, Meadow Lake .. 37-37 - 74
- Claude Myers, jr, Meadow Lake 37-37 - 74
- Howard Nichols, Mission Hills . 36-38 - 74
- Carey Ballew, jr, Meadow Lake 38-36 - 74
- James Norberg, Mission Hills.... 35-39 - 74
- 6 Martin Stein, Oakwood..... 36-39 - 75
- 7 Paul Jackson, Swope Park ..... 38-38 - 76
- 8 Frank Staller, Wood Hill ..... 38-39 - 77
- Morton Benedict, Swope Park ... 39-38 - 77
- Frank Aylward, Milburn ..... 37-40 - 77
- Ed Guettel, Oakwood..... 37-40 - 77
- 12 M. Bennett, Meadow Lake ..... 37-41 - 78
- Roger Mayor, Meadow Lake ..... 40-38 - 78
- 14 Wes Dunlap, Eastwood Hills ..... 39-40 - 79
- Percy Gill, Swope Park ..... 36-43 - 79
- George Weaver, Mission Hills ... 41-38 - 79
- 17 J.H. Goodman, KCCC ..... 41-39 - 80
- Benny Boggess, Old Mission .... 40-40 - 80
- 19 Charles E. Wilcox, Swope Park. 40-41 - 81
- 20 A.G. Carter jr, Wood Hill ..... 41-41 - 82
- George German, Blue Hills ..... 43-39 - 82
- S. Tudor, Swope Park ..... 41-41 - 82
- C.N. Prouty, jr, Milburn ..... 41-41 - 82
- A. Hauck, Mission Hills ..... 39-43 - 82
- R. Twyman, Mission Hills ..... 42-40 - 82
- Bun Patt, Mission Hills..... 41-41 - 82
- William Rust, Mission Hills ..... 41-41 - 82
- W. Ferguson, Old Mission ..... 43-39 - 82
- Ed McMahon, Swope Park ..... 40-42 - 82
- 30 Claiborn Ford, Blue Hills ..... 41-42 - 83
- Stanley Jackson, Swope Park ... 40-43 - 83
- C.J. Creager, Swope Park ..... 42-41 - 83

**Senior Division (30 and over)**

- 1 Maurice R. Smith, Indian Hills.. 36-36 - 72
- 2 J.M. Freeland, KCCC ..... 40-35 - 75
- 3 Frank English, Milburn..... 38-39 - 77
- Ed Smith, Wood Hill..... 38-39 - 77
- 5 Charles Aylward, Swope Park ... 38-41 - 79
- Les G. Lovelace, Milburn ..... 40-39 - 79
- 7 R.V. Aycock, Mission Hills..... 41-39 - 80
- G.G. Wheat, Milburn ..... 41-39 - 80
- Milt Goldstandt, Old Mission .... 41-39 - 80
- 10 Paul Hamilton, Indian Hills ..... 37-44 - 81
- O.C. Tosh, Milburn ..... 41-40 - 81
- 12 W.J. Wilson, Milburn ..... 41-41 - 82
- James Gleason, jr, Milburn ..... 39-43 - 82

- Lloyd Palis, Swope Park..... 42-40 - 82
- Ed Cochrane, Hillcrest..... 42-40 - 82
- Def.B. Peter, Mission Hills ..... 41-41 - 82
- 17 G.W. Weston, Milburn ..... 41-42 - 83
- W.W. Scott, Swope Park ..... 44-39 - 83
- John Atherton, Swope Park..... 39-44 - 83
- Don McGreevey, Mission Hills . 41-42 - 83
- 21 Howard Ellfeldt, Milburn ..... 44-40 - 84
- F.J. Dean, KCCC..... 44-40 - 84
- H.W. Kinney, Hillcrest..... 40-44 - 84
- 24 Art McClure, Eastwood Hills .... 42-43 - 85
- Ed Conklin, Hillcrest ..... 42-43 - 85
- Cleo Schofield, Swope Park ..... 44-41 - 85
- Lester Peterson, Hillcrest..... 45-40 - 85
- 28 Phil Archer, Meadow Lake ..... 43-43 - 86
- A. E. Talbot, Ivanhoe ..... 46-40 - 86
- W.S. Mann, Mission Hills..... 42-44 - 86
- R.C. Ward, South Ridge..... 44-42 - 86
- J.W. Cook, Milburn..... 44-42 - 86

**Junior Division (29 and under)**

**1st Round**

- Myers def Goodman ..... 2&1
- Benedict def Ferguson ..... 4&2
- Kendall Mayor def German ..... default
- Roger Mayor def Carter ..... 3&2
- Ballew def Wilcox ..... 4&3
- Guettel def McMahan ..... 3&2
- Paul Jackson def Prouty ..... 5&3
- Gill def Stanley Jackson ... 2&1

- Norberg def Boggess ..... 3&2
- Frank Aylward def Tudor ..... 3&2
- Stein def Hauck ..... 4&3
- C. Ford def Dunlap ..... 2&1
- Nichols def Patt..... 2 up
- Rust def Bennett ..... 1 up
- Staller def Twyman ..... 1 up (19)
- Creager def Weaver ..... 3&2

**2nd Round**

- Benedict def Myers..... 1 up
- Kendall Mayor def Roger Mayor ..... 2&1
- Ballew def Guettel ..... 3&2
- Jackson def Gill..... 3&2
- Frank Aylward def Norberg..... 3&2
- Stein def C. Ford..... 2&1
- Rust def Nichols ..... 4&3
- Staller def Creager ..... 1 up

**Quarterfinals**

- Benedict def Kendall Mayor..... 1 up

- Ballew def Jackson ..... 6&5
- Frank Aylward def Stein..... 2 up
- Staller def Rust..... 2 up

**Semifinals**

- Ballew def Benedict..... 5&3
- Frank Aylward def Staller ..... 1 up

**Finals**

- Ballew def Frank Aylward ..... 7&6

**Senior Division (30 and over)**

**1st Round**

- Maurice Smith def Atherton..... 9&8
- McClure def Goldstandt ..... 1 up
- Chas Aylward def Kinney ..... 5&4
- English def Scott..... 5&4
- Tosh def Ward ..... 1 up
- Wheat def Conklin ..... 3&2
- Archer def Cochrane..... default
- Hamilton def Cook ..... 6&4

- Weston def Freeland ..... 4&3
- Lovelace def Schofield..... 3&2
- Wilson def Weishaar ..... 5&4
- Talbot def Gleason..... 1 up (19)
- Ellfeldt def Smith ..... 5&4
- Aycock def Peterson ..... 1 up (20)
- Peter def Weidan..... 6&5
- Palis def Mann..... 4&3

**2nd Round**

- English def Tosh ..... 3&2
- Wheat def Archer..... 5&3
- Hamilton def Weston ..... 2&1
- Lovelace def Wilson ..... 2&1
- Talbot def Ellfeldt..... 1 up
- Aycock def Peter..... 2 up
- Palis def Chas Aylward 1 up (19)
- Maurice Smith def McClure..... 3&2

**Quarterfinals**

- Smith def Palis ..... 6&5
- Wheat def English..... 1 up
- Lovelace def Hamilton..... 1 up (20)
- Talbot def Aycock ..... 2&1

**Semifinals**

- Wheat def Smith ..... 1 up
- Lovelace def Talbot..... 1 up

**Finals**

- Lovelace def Wheat ..... 1 up (40)

**1931 City Championship Finals**

- Ballew def Lovelace ..... 5&4



Carey Ballew, jr.  
 Champion 1930, 1931,  
 1932, 1951  
 Runner-up 1935



Oakwood CC  
 #10 Par 5

**1932**

Oakwood CC, Par 71  
 June 13-18

**Junior Division (29 and under)**

- 1 Paul Jackson, Swope Park ..... 35-35 - 70
- 2 Sid Tudor, Swope Park ..... 37-35 - 72
- 3 Frank Staller, Wood Hill ..... 36-38 - 74
- Carl Lawson, Old Mission ..... 37-37 - 74
- 5 Morton Benedict, Swope Park ... 36-39 - 75
- Ned Embry, Blue Hills ..... 38-37 - 75
- Dan Dunlap, Milburn ..... 37-38 - 75
- 8 Kendall Mayor, Meadow Lake .. 37-39 - 76
- O.O. Rose, Swope Park ..... 38-38 - 76
- Johnnie Campbell, Quivira ..... 38-38 - 76
- Frank Aylward, Wood Hill ..... 39-37 - 76
- Claude Myers, jr, Meadow Lake 37-39 - 76
- Harold Wickham, Milburn ..... 38-38 - 76
- 14 Carey Ballew, jr. Meadow Lake 40-37 - 77
- Bill Rust, Mission Hills ..... 40-37 - 77

**Intermedefiate Division (30-49)**

- 1 W.W. Scott, Swope Park ..... 39-35 - 74
- Ray Loman, Old Mission ..... 39-35 - 74
- 3 Dr. Bert McDowell, Indian Hills 41-34 - 75
- L.B. Andrew, Milburn ..... 36-39 - 75
- 5 Walter Wilson, Milburn ..... 39-37 - 76
- Frank J. English, Milburn ..... 37-39 - 76
- 7 Art McClure, Eastwood Hills .... 38-39 - 77
- Ted Hofheims, Wood Hill ..... 36-41 - 77
- 9 Charles Aylward, Swope Park ... 39-39 - 78

- 10 Phil Archer, Meadow Lake ..... 39-40 - 79
- John Taylor, Mission Hills ..... 39-40 - 79
- Les Lovelace, Milburn ..... 40-39 - 79
- M.R. Smith, Indian Hills ..... 42-37 - 79
- Howard Ellfeldt, Swope Park .... 40-39 - 79
- 15 Grable Duvall, jr, Wood Hill ..... 39-41 - 80
- Fred Dowling, Milburn ..... 40-40 - 80

**Junior Division (29 and under)**

**1st Round**

- Ballew def Dunlap ..... 7&5
- Embry def Rust ..... 4&3
- Rose def Tudor ..... 2&1
- Larson def Wickham ..... 8&7
- Benedict def Aylward ..... 3&2
- Jackson def Mayor ..... 2 up
- Smith def Myers ..... 2&1
- Staller def Campbell ..... 5&4

**Quarterfinals**

- Jackson def Staller ..... 1 up(20)
- Rose def Embry ..... 3&2
- Ballew def Larson ..... 3&2
- Benedict def Smith ..... 3&1

**Semifinals**

- Ballew def Benedict ..... 2&1
- Jackson def Rose ..... 7&6

**Finals**

- Ballew def Jackson ..... 1 up

**Intermediate Division (30-49)**

**1st Round**

- Taylor def McDowell ..... 3&2
- Duvall def McClure ..... 5&4
- Aylward def Loman ..... 1 up (21)
- English def Ellfeldt ..... 4&3
- Andrew def Smith ..... 1 up (21)
- Archer def Scott ..... 2 up
- Dowling def Hofheims ..... 6&4
- Lovelace def Wilson ..... 6&4

**Quarterfinals**

- Taylor def Duvall ..... 4&3
- English def Aylward ..... 3&2
- Andrew def Dowling ..... 6&5
- Archer def Lovelace ..... 2&1

**Semifinals**

- English def Taylor ..... 2&1
- Archer def Andrew ..... 2&1

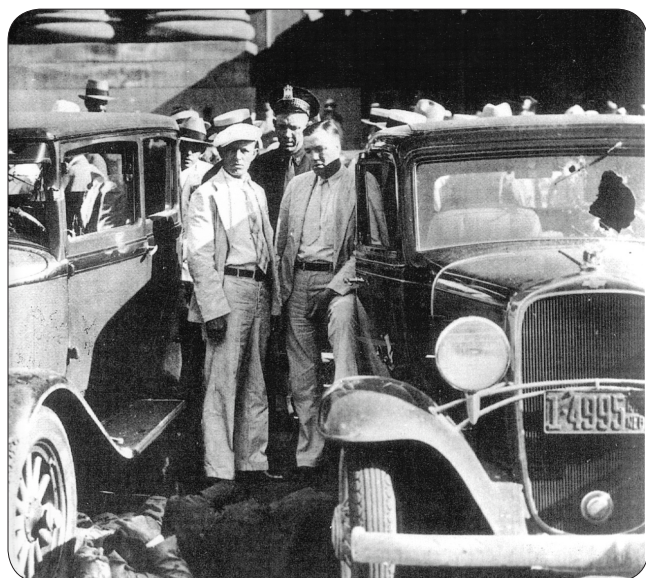
**Finals**

- English def Archer ..... 6&5

**1932 City Championship Finals**

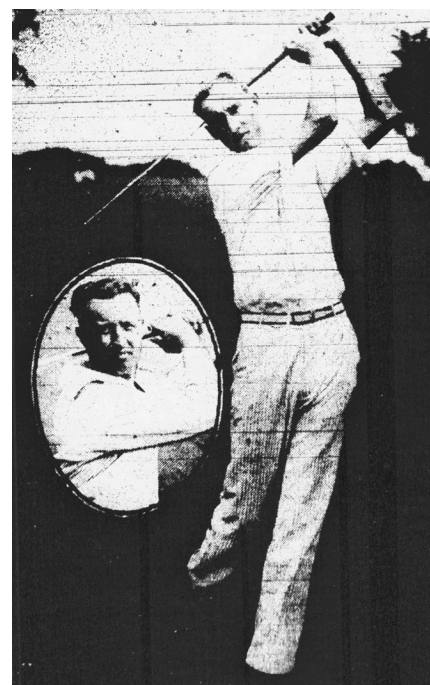
- Ballew def English ..... 6&4

Ballew had to win a 5 for 2 playoff to make match play. He had just graduated from MU a week earlier.



Union Station Massacre  
June 17, 1933  
just three days before the  
tournament began

Johnny Goodman  
won the 1933  
U.S. Open  
at North Shore, Chicago,  
the last amateur  
to do so.



Kendall Mayor  
Champion 1933, 1934  
(inset: Grable Duvall, jr.  
Champion 1935

**1933**

Wood Hill CC, Par 72  
June 20-24

**Junior Division (29 and under)**

- 1 O.O. Rose, Swope Park ..... 36-37 - 73
- 2 Bill Rust, Mission Hills ..... 36-39 - 75
- Arval Schultz, Wood Hill..... 38-37 - 75
- 4 John Rice, Stayton Meadows..... 40-36 - 76
- Art Wangler, Swope Park..... 36-40 - 76
- 6 Claiborn Ford, Blue Hills ..... 36-41 - 77
- Frank Staller, Wood Hill ..... 38-39 - 77
- 8 Sam Knott, Old Mission ..... 39-39 - 78
- Wes Dunlap, Stayton Meadows . 39-39 - 78
- Nolan Hatcher, Wood Hill ..... 39-39 - 78
- Bill Kahl, Milburn ..... 40-38 - 78
- Mel Smith, Blue Hills ..... 38-40 - 78
- 13 William Shaw, Wood Hill ..... 39-40 - 79
- Kendall Mayor, Blue Hills ..... 42-37 - 79
- George Carter, jr, Wood Hill ..... 39-40 - 79
- Claude Sadler, Swope Park..... 44-35 - 79
- Morton Benedict, Swope Park... 39-40 - 79
- Ken Geary, Milburn ..... 40-39 - 79
- 19 Martin Stein, Oakwood..... 39-41 - 80
- 20 Ed Skradski, Quivira..... 42-39 - 81
- Ronald Wickham, Blue Hills ..... 38-43 - 81
- Johnny Campbell, Old Mission . 41-40 - 81
- 23 Ed Johnson, jr, Blue Hills ..... 40-42 - 82
- 24 Al Wendell, Ivanhoe ..... 41-42 - 83
- Dr. C.N. Sheldon, Blue Hills ..... 40-43 - 83
- Ray Watson, KCCC ..... 44-39 - 83
- Dave Marsh, Swope Park ..... 41-42 - 83
- Sperry Graves, Blue Hills ..... 44-39 - 83
- Burt Johnson, Old Mission ..... 40-43 - 83
- 30 Coke Coleman, Blue Hills ..... 42-42 - 84
- Paul Moore, Blue Hills ..... 42-42 - 84
- Tom Stephenson, Milburn ..... 42-42 - 84

**Intermediate Division (30-49)**

- 1 Frank Aylward, Swope Park ..... 35-38 - 73
- 2 Grable Duvall, jr, Wood Hill..... 37-36 - 73

- 3 Ed Pugh, Indian Hills..... 37-40 - 77
- E.A. Weishaar, Indian Hills ..... 38-39 - 77
- 5 Jim Gleeson, Wood Hill..... 37-41 - 78
- 6 Lee Lovelace, Milburn..... 41-38 - 79
- A.E. Talbot, Ivanhoe ..... 38-41 - 79
- 8 Phil Archer, Blue Hills ..... 41-39 - 80
- 9 John Clark, Wood Hill ..... 40-42 - 82
- L.G. McFall, Swope Park ..... 40-42 - 82
- M.R. Smith, Indian Hills..... 40-42 - 82
- 12 Dr. Bert McDowell, Indian Hills.. 42-41 - 83
- Charles Aylward, Swope Park ... 43-40 - 83
- 14 Ralph Redding, Stayton Meadows 42-42 - 84
- 15 E.L. Crookshank, Old Mission .. 43-42 - 85
- Jack Street, Wood Hill ..... 43-42 - 85

**Junior Division**

**1st Round**

- Mayor def Stephenson .....3&2
- Wendel def Kahl .....2&1
- Sadler def Schultz .....4&3
- Rice def Wickham .....2&1
- Shaw def Moore .....3&2
- Knott def Sheldon.....5&4
- Coleman def Geary .....2 &1
- Wangler def Skradski .....6&5

- Dunlap def Graves.....6&5
- Rust def Stein.....5&4
- Rose def Benedict.....5&4
- Carter def Johnson.....5&3
- Hatcher def Marsh.....5&4
- C. Ford def Campbell ... 1 up (20)
- Watson def Smith .....2 up
- Staller def Johnson.....7&6

**2nd Round**

- Mayor def Wendel .....3&1
- Coleman def C. Ford.....4&3
- Staller def Shaw .....6&5
- Rust def Knott.....3&2
- Dunlap def Sadler.....6&5

- Wangler def Watson .....6&5

**Quarterfinals**

- Staller def Rust.....5&3
- Mayor def Wangler .....4&3
- Dunlap def Coleman .....3&1
- Hatcher def Rice.....6&4

**Semifinals**

- Mayor def Dunlap .....4&2
- Staller def Hatcher .....6&4

**Finals**

- Mayor def Staller .....9&8

**Intermediate Division**

**1st Round**

- Talbot def Crookshank..... 1 up
- Clark def Pugh.....6&5
- Archer def Street.....7&5
- Duvall def Smith .....5&3
- Frank Aylward def McFall .....5&3
- Weishaar def Chas. Aylward ...4&3
- McDowell def Gleeson .....2&1
- Redding def Lovelace .....4&3

**Quarterfinals**

- Duvall def McDowell
- Talbot def Clark
- Archer def Weishaar .....4&3
- Frank Aylward def Redding

**Semifinals**

- Duvall def Talbot.....6&5
- Archer def Frank Aylward ...2&1

**Finals**

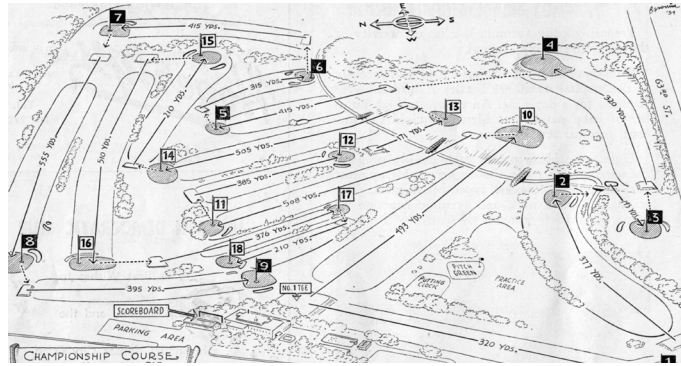
- Duvall def Archer .....5&4

**1933 City Championship Finals**

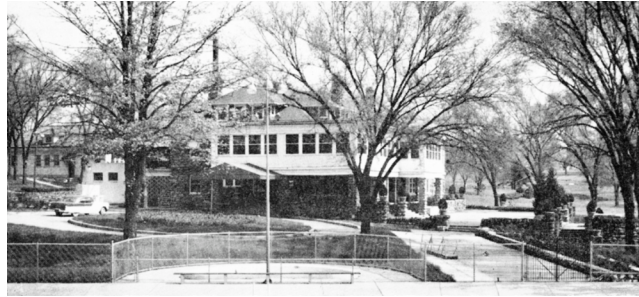
- Mayor def Duvall, jr..... 1 up



Grable Duvall, jr



The Blue Hills layout at 63rd & The Paseo



Blue Hills clubhouse

In the summer of 1934, records were set that still stand for extreme heat:

103 degrees on June 20th, 108 on the 23rd, 105 on the 29th!

Because of the heat the Kansas City Match Play was moved to September

**1934**

Blue Hills CC, Par 71  
Sept 17-22

**Junior Division (29 and under)**

- 1 Kendall Mayor, Blue Hills ..... 35-36 - 71
- 2 Ray Watson, KCCC ..... 37-36 - 73
- Morton Benedict, Swope Park ... 38-35 - 73
- 4 George Allen, Old Mission ..... 37-38 - 75
- Bert McDowell, jr, Milburn ..... 39-36 - 75
- Richard Twyman, Mission Hills 38-37 - 75
- 7 Dave Marsh, Meadow Lake ..... 40-36 - 76
- 8 Bob Clark, jr, Ivanhoe ..... 38-39 - 77
- Al Wendall, Indian Hills ..... 37-40 - 77
- 10 Larry Dall, Blue Hills ..... 43-35 - 78
- Harold Arnold, Indian Hills ..... 40-38 - 78
- John Harrington, Blue Hills ..... 42-36 - 78
- R.A. King, Blue Hills ..... 39-39 - 78
- Art Wangler, Swope Park ..... 40-38 - 78
- 15 Mel Smith, Swope Park ..... 41-38 - 79
- John Rice, Stayton Meadows ..... 38-41 - 79
- Morton Jones, Mission Hills ..... 39-40 - 79
- Buck Weaver, Blue Hills ..... 40-39 - 79
- Tom Callaway, Meadow Lake ... 40-39 - 79
- Jack Cooper, jr, Meadow Lake .. 42-37 - 79
- Joe Fuchs, Old Mission ..... 40-39 - 79
- 22 Harold Wickham, Meadow Lake 42-38- 80
- Buddy Sophian, Oakwood ..... 42-38 - 80
- Coke Coleman, Swope Park ..... 42-38 - 80
- 25 B.W. Deam, Blue Hills ..... 42-39 - 81
- Dan Byrne, Old Mission ..... 44-37 - 81
- Dan Loeb, Oakwood ..... 42-39 - 81
- 28 Ed Skradski, Quivira ..... 40-43 - 83
- Ken Krakauer, Old Mission ..... 45-38 - 83
- 30 Bill Fellhauer, Wood Hill ..... 44-40 - 84
- 31 John Peterson, Quivira ..... 44-42 - 86
- 32 O.O. Rose, Meadow Lake ..... 44-42 - 86

**Intermediate Division (30-49)**

- 1 Dr. Bert McDowell, Milburn ..... 36-36 - 72
- 2 Ed Schwartz, Hillcrest ..... 39-36 - 75

- 3 Frank Aylward, Swope Park ..... 41-35 - 76
- Al Couch, Ivanhoe ..... 39-37 - 76
- Grable Duvall, jr, Indian Hills ... 41-35 - 76
- Ralph Redding, Stayton Meadows 42-34 - 76
- 7 Ray Loman, Meadow Lake ..... 38-40 - 78
- Bob Tousley, Hillcrest ..... 41-37 - 78
- 9 Ross Evans, Milburn ..... 40-39 - 79
- Ed Price, Blue Hills ..... 42-37 - 79
- 11 E.E. Kleecan, Milburn ..... 45-36 - 81
- Harry Tierney, Old Mission ..... 43-38 - 81
- 13 Bill Leahy, Wood Hill ..... 43-39 - 82
- R.F. Ragan, Ivanhoe ..... 42-40 - 82
- M.R. Smith, Indian Hills ..... 43-39 - 82
- John Clark, Wood Hill ..... 42-40 - 82

**Junior Division**

**1st Round**

- Wendall def Sophian ..... 3&2
- Callaway def Weaver ..... 2&1
- Allen def Loeb ..... 3&2
- Dall def Fuchs ..... 4&3
- Mayor def Peterson ..... 5&4
- Wickham def Clark ..... 4&3
- Harrington def Cooper ..... 1 up
- Deam def McDowell, jr ..... 1 up
- Jones def Arnold ..... 6&5
- Twyman def Krakauer ..... 2 up
- Benedict def Fellhauer ..... 1 up (20)
- King def Coleman ..... 4&3
- Wangler def Rose ..... 1 up
- Watson def Skradski ..... 2&1
- Byrne def Marsh ..... default
- Smith def Rice ..... 3&1

**2nd Round**

- Wendall def Calloway ..... 2&1
- Allen def Dall ..... 2&1
- Mayor def Wickham ..... 3&1
- Harrington def Deam ..... 4&3
- Jones def Twyman ..... 5&4
- Benedict def King ..... 3&2

- Wangler def Watson ..... 2&1
- Byrne def Smith ..... 1 up (19)
- Quarterfinals**
- Mayor def Harrington ..... 2&1
- Benedict def Allen ..... 1 up
- Wangler def Byrne ..... 1 up (19)
- Wendall def Jones ..... 4&2
- Semifinals**
- Mayor def Wangler ..... 2&1
- Benedict def Wendall ..... 3&2
- Finals**
- Mayor def Benedict ..... 3&1

**Intermediate Division**

**1st Round**

- Aylward def Leahy ..... 3&2
- Ragan def Tousley ..... 4&3
- Duvall def Kleecan ..... 3&2
- Smith def Loman ..... 3&2
- Couch def Tierney ..... 3&2
- Redding def Clark ..... 775
- McDowell def Evans ..... 2&1
- Schwartz def Price ..... 3&2

**Quarterfinals**

- Aylward def McDowell ..... 4&3
- Duvall def Ragan ..... 7&5
- Redding def Schwartz ..... 5&4
- Smith def Couch ..... 2&1

**Semifinals**

- Duvall def Aylward ..... 2&1
- Redding def Smith ..... 5&4

**Finals**

- Duvall def Redding ..... 5&3

**1934 City Championship Finals**

- Mayor def Duvall ..... 1 up
- Duvall missed a two foot putt on the 36th green to lose.



Indian Hills #1. Now imagine it without trees.

On the right: Grable Duvall, jr,  
on the left is Bob Willits

**1935**

Indian Hills CC, Par 70  
Sept 16-21

**Junior Division (29 and under)**

- 1 Warren Riepen, Swope Park ..... 36-35 - 71
  - 2 George Allen, Old Mission ..... 36-37 - 73
  - Kendall Mayor, jr, Blue Hills..... 34-39 - 73
  - 4 Larry Trickett, jr, Lake Quivira . 39-35 - 74
  - 5 Ray Watson, KCCC ..... 38-38 - 76
  - Carey Ballew, jr, Blue Hills ..... 38-38 - 76
  - Tom Stephenson, Meadow Lake 41-35 - 76
  - 8 Harold Wickham, Meadow Lake 38-39 - 77
  - 9 Harmon Arnold, Old Mission .... 40-38 - 78
  - Walter Cash, Meadow Lake ..... 39-39 - 78
  - 11 Carl Schultz, Old Mission..... 41-38 - 79
  - Horace Hedges, Meadow Lake.. 40-39 - 79
  - 13 B.W. Deam, Blue Hills ..... 39-41 - 80
  - Glenn Oatman, Swope Park..... 41-39 - 80
  - 15 Bob Clark, Ivanhoe ..... 43-38 - 81
  - 16 Ed Skradski, Lake Quivira..... 42-40 - 82
  - M.S. Hatcher, Hillcrest ..... 42-40 - 82
  - 18 Harold Funston, Stayton Meadows . 42-41 - 83
  - Norman Schaeffer, Old Mission 46-38 - 84
  - Glen Hannaman, Old Mission ... 46-38 - 84
  - Paul Welton, Wood Hill ..... 43-41 - 84
  - Morton Jones, Mission Hills ..... 42-42 - 84
  - Buck Weaver, Blue Hills..... 42-42 - 84
  - 24 Don Loeb, Oakwood..... 40-45 - 85
  - William Fellhauer, Hillcrest..... 42-43 - 85
  - C.W. Allen, Mission Hills ..... 44-41 - 85
  - 27 Walter Blevins, Old Mission..... 42-44 - 86
  - Bert McDowell, jr, Milburn ..... 41-45 - 86
  - Dale Werntz, Hillcrest..... 43-43 - 86
  - W.J. Kraxner, Lake Quivira ..... 45-41 - 86
  - 31 George Barrett, Meadow Lake... 45-42 - 87
  - 32 Joe Fuchs, Old Mission..... 48-40 - 88
- Intermediate Division (30-49)**
- 1 Ralph Redding, Hillcrest ..... 39-35 - 74
  - 2 Grable Duvall, jr, Hillcrest ..... 42-34 - 76
  - John Boyd, Blue Hills..... 39-37 - 76
  - Ed Growney, Lake Quivira ..... 40-36 - 76
  - 5 Ted Hofheins, Blue Hills ..... 41-37 - 78

- 6 R.V. Olson, Hillcrest ..... 39-40 - 79
- E.A. Weishaar, Indian Hills ..... 43-36 - 79
- 8 Ray Quade, Old Mission..... 41-39 - 80
- 9 Fred Schindler, Meadow Lake... 42-39 - 81
- 10 Ed Hook, Indian Hills ..... 41-41 - 82
- 11 Dr. Bert McDowell, Milburn .... 42-41 - 83
- Brick Wornall, Indian Hills..... 40-43 - 83
- 13 Joe Jackson, Old Mission ..... 42-43 - 85
- Joe Chambers, Hillcrest ..... 44-41 - 85
- 15 J.R. Clark, Wood Hill..... 44-42 - 86
- Lee Stephenson, Milburn..... 43-43 - 86

**Junior Flight**

**1st Round**

- Riepen def Skradski ..... 1 up
  - Arnold def Fellhauer ..... 2&1
  - McDowell, jr def Oatman ..... 4&3
  - Stephenson def Weaver ..... 1 up
  - Ballew def Hanneman..... 7&6
  - Clark def Barrett ..... 5&4
  - Schultz def Kraxner..... default
  - Allen def Funston ..... 2&1
  - Trickett def Welton ..... 6&5
  - Werntz def Hedges ..... 4&3
  - Hatcher def Fuchs ..... 574
  - Wickham def Loeb..... 4&3
  - Jones def Watson ..... 2&1
  - Blevins def Dean ..... 3&2
  - Cash def Alley ..... 8&7
  - Mayor def Schaeffer..... 2 up
- 2nd Round**
- Riepen def Arnold..... 5&3
  - Stephenson def McDowell, jr ..... 1 up
  - Ballew def Clark ..... 4&2
  - Schultz def Allen ..... 2 up
  - Trickett def Werntz ..... 3&2
  - Wickham def Hatcher ..... 2&1
  - Blevins def Jones ..... default
  - Mayor def Cash ..... 3&2
- Quarterfinals**
- Trickett def Wickham ..... 1 up

- Blevins def Mayor ..... 1 up
  - Riepen def Stephenson ..... 3&1
  - Ballew def Schultz ..... 3&1
- Semifinals**
- Ballew def Riepen..... 6&4
  - Trickett def Blevins..... 3&1
- Finals**
- Ballew def Trickett ..... 1 up (19)

**Intermediate Flight**

**1st Round**

- Redding def Schindler..... 3&2
- Hofheins def Jackson ..... 3&2
- Weishaar def Clark ..... 7&6
- Wornall def Boyd ..... 2&1
- Duvall, jr def Dr. McDowell.... 1 up
- Quade def Stephenson ..... 3&1
- Olson def Chambers..... 3&2
- Hook def Growney ..... default

**Quarterfinals**

- Redding def Hofheins ..... 5 73
- Weishaar def Wornall ..... 3&1
- Duvall def Quade ..... 5&4
- Olson def Hook ..... 2 up

**Semifinals**

- Redding def Weishaar .... 1 up (19)
- Duvall def Olson ..... 2&1

**Finals**

- Duvall def Redding ..... 4&3

**1935 City Championship Finals**

- Duvall def Ballew..... 4&3

In the ten years that the tournament had two divisions, only in 1935 did the older division's champion win the City Championship. Grable Duvall, age 37 defeated Carey Ballew, age 24.



Milburn Golf & CC



Walter Blevins  
Champion 1936, 1938



Missouri Amateur  
Champion 1936, 1938

**1936**

Milburn G&CC, Par 72  
August 31-Sept 5

**Junior Flight (29 and under)**

- 1 Walter Cash, Old Mission ..... 34-36 - 70
  - 2 Carey Ballew, Jr, Blue Hills ..... 37-35 - 72
  - 3 Harold Wickham, Old Mission .. 37-36 - 73
  - 4 Bert McDowell, Jr, ..... 39-35 - 74
  - 5 A.G. Carter, Swope Park ..... 39-36 - 75
  - 6 F.A. Bombeck, Milburn ..... 38-38 - 76
  - Howard Norman, Swope Park ... 39-37 - 76
  - Larry Beyers, Old Mission ..... 40-36 - 76
  - Glenn Oatman, Swope Park ..... 37-39 - 76
  - 10 Ken Krakauer, Swope Park ..... 42-36 - 78
  - Ray Watson, KCCC ..... 40-38 - 78
  - William Powell, Hillcrest ..... 38-40 - 78
  - Walter Blevins, Swope Park ..... 38-40 - 78
  - Kendall Mayer, Blue Hills ..... 39-39 - 78
  - Dale Wertz, Hillcrest ..... 41-37 - 78
  - B.W. Deam, Blue Hills ..... 35-43 - 78
  - 17 Bob Davis, Blue Hills ..... 41-38 - 79
  - Gordon Myers, Indian Hills ..... 40-39 - 79
  - 19 A.L. Schreiner, Old Mission ..... 40-40 - 80
  - Tom Stephenson, Milburn ..... 39-41 - 80
  - Phil Shaw, Hillcrest ..... 40-40 - 80
  - 22 Ralph Myers, Old Mission ..... 43-38 - 81
  - Don Loeb, Oakwood ..... 42-39 - 81
  - B.A. Hays, Hillcrest ..... 43-38 - 81
  - 25 Ed Boswell, Old Mission ..... 41-41 - 82
  - 26 Ed Johnson, Old Mission ..... 41-42 - 83
  - Paul Welton, Old Mission ..... 42-41 - 83
  - 28 Larry Calkins, Indian Hills ..... 43-41 - 84
  - Charles Ransom, Hillcrest ..... 41-43 - 84
  - Robert Clark, Ivanhoe ..... 43-41 - 84
  - 31 George Caudill, Old Mission .... 42-44 - 86
  - Norman Schaefer, Old Mission . 45-42 - 87
- Intermediate Flight (30-49)**
- 1 Ray Loman, Hillcrest ..... 36-39 - 75
  - 2 Grable Duvall, Jr, Hillcrest ..... 39-37 - 76
  - Bert McDowell, Milburn ..... 38-38 - 76
  - 4 Bill Hart, Swope Park ..... 41-36 - 77

- Ray Quade, Old Mission ..... 38-39 - 77
- Ralph Redding, Hillcrest ..... 39-38 - 77
- 7 Larry Drake, Indian Hills ..... 39-39 - 78
- Tom Bramlett, Swope Park ..... 40-38 - 78
- 9 John Rice, Old Mission ..... 41-38 - 79
- 10 Ed Hook, Indian Hills ..... 42-39 - 81
- Karl Schroer, Milburn ..... 43-38 - 81
- 12 Addie Pick, Indian Hills ..... 41-41 - 82
- 13 C.K. Lawson, Blue Hills ..... 44-40 - 84
- R.C. Coleman, Indian Hills ..... 40-44 - 84
- 15 John Boyd, Blue Hills ..... 40-45 - 85
- 16 H.V. Herring, Milburn ..... 43-43 - 86

**Junior Flight  
1st Round**

- Stephenson def Carter .....
- Powell def Calkins .....
- Blevins def Clark .....
- Schreiner def Norman .....
- Wertz def Caudill .....
- Oatman def Loeb .....
- McDowell, Jr def Shaw .....
- Watson def Johnson .....
- Bombeck def Hays .....
- Mayor def Ransom .....
- Cash def Deam .....
- Beyers def Myers .....
- Wickham def Davis .....
- Krakauer def Welton .....
- Busler def Boswell .....
- Ballew def Myers .....

**2nd Round**

- Stephenson def Powell ..... 8&7
- Blevins def Schreiner ..... 3&2
- Wertz def Oatman ..... 3&1
- McDowell, Jr def Watson ..... 1 up
- Bombeck def Mayor ..... 3&2
- Cash def Beyers ..... 1 up
- Wickham def Krakauer ..... 1 up
- Busler def Ballew ..... 4&3

**Quarterfinals**

- Stephenson def Cash ..... 5&4
- Bombeck def Wickham ..... 1 up
- Blevins def Busler ..... 3&2
- McDowell, Jr def Wertz ..... 1 up

**Semifinals**

- Bombeck def Stephenson ..... 1 up
- Blevins def McDowell, Jr ..... 1 up

**Finals**

- Blevins def Bombeck .... 1 up (38)

**Intermediate Flight**

**1st Round**

- Duvall def Hook ..... default
- McDowell, Jr def Schroer ..... 4&2
- Redding def Coleman ..... default
- Hart def Lawson ..... default
- Rice def Loman ..... 2 up
- Boyd def Bramlett ..... default
- Herring def Drake ..... 1 up
- Quade def Pick ..... 2 up

**Quarterfinals**

- Duvall def Boyd ..... 2 up
- McDowell, Jr def Hart ..... 2 up
- Rice def Redding ..... 1 up
- Herring def Quade ..... 1 up

**Semifinals**

- Duvall def Rice ..... 5&4
- Herring def McDowell, Jr. .... 2&1

**Finals**

- Duvall def Herring ..... 7&5

**1936 City Championship Finals**

- Blevins def Duvall ..... 1 up (38)

Blevins was 2 down with 3 to go. He won the 38th when Duvall hit his third shot over the green and out-of-bounds. Blevins made a 30 foot putt for a birdie 4, just to make sure. Blevins had beaten Duvall in the Missouri Amateur finals at Hillcrest in June





Buck Weaver &  
Larry Beyers  
Champion,  
1937, 1939



Hillcrest # 9  
Par 4

**1937**

Hillcrest CC, Par 73  
August 10-15

**Junior Flight (29 and under)**

1	Bob Willits, Hillcrest .....	38-33 - 71
2	Bob Clark, Ivanhoe .....	37-35 - 72
3	Walter Cash, Hillcrest .....	38-35 - 73
	Ken Krakauer, Swope Park .....	38-35 - 73
	Gordon Myers, Indian Hills .....	38-35 - 73
6	Tom Stephenson, Milburn .....	40-34 - 74
	Buck Loman, Hillcrest .....	38-36 - 74
	Walter Blevins, Swope Park .....	36-38 - 74
9	Carey Ballew, Jr, Blue Hills .....	39-36 - 75
	A.J. Carter, Jr, Indian Hills .....	38-37 - 75
	Grover Smith, Swope Park .....	37-38 - 75
	Ayers Bombeck, Milburn .....	40-35 - 75
13	Glenn Oatman, Swope Park .....	38-38 - 76
	Bill McGrath, Indian Hills .....	40-36 - 76
	Larry Beyers, Swope Park .....	38-38 - 76
	Paul Welton, Quivira .....	38-38 - 76
	Bert McDowell, Jr, Milburn .....	37-39 - 76
	Jim Clark, Swope Park .....	36-40 - 76
	William Shaw, Milburn .....	38-38 - 76
20	Bill Udell, Blue Hills .....	40-37 - 77
21	Tom Callaway, Hillcrest .....	39-39 - 78
22	Joe Bauers, Milburn .....	39-40 - 79
	Jack McMahan, Swope Park .....	41-38 - 79
	Ted Hume, Quivira .....	40-39 - 79
	Ted Bland, Indian Hills .....	40-39 - 79
26	E.J. Reardon, Milburn .....	40-40 - 80
	Ralph Wilkerson, Indian Hills ...	41-39 - 80
	Don Loeb, Oakwood .....	44-36 - 80
	Howard Norman, Swope Park ...	40-40 - 80
	Ralph Myers, Milburn .....	40-40 - 80
	Norman Schaeffer, Swope Park ..	43-37 - 80
32	C.W. Alley, Mission Hills .....	42-38 - 80
	James Talbot, Ivanhoe .....	40-40 - 80

**Intermediate Flight (30-49)**

1	Grable Duvall, Jr, Hillcrest .....	36-35 - 71
2	Frank Aylward, Hillcrest .....	41-33 - 74
	J.J. Henry, Indian Hills .....	37-37 - 74
	N.S. Hatcher, Hillcrest .....	36-38 - 74
	Buck Weaver, Blue Hills .....	34-40 - 74
6	J.H. Goodwin, KCCC .....	38-37 - 75
	Martin Stein, Oakwood .....	40-35 - 75
8	Charles Aylward, Swope Park ...	38-38 - 76
	Jim Williams, Hillcrest .....	41-35 - 76
	George Aylward, Swope Park .....	39-37 - 76
	E.S. Royster, Hillcrest .....	39-37 - 76
12	John Boyd, Blue Hills .....	39-38 - 77

13	Fred Ryan, Hillcrest .....	39-39 - 78
	Ralph Redding, Hillcrest .....	42-36 - 78
	R.J. Gardner, Milburn .....	38-40 - 78
16	Morris .R. Smith, Indian Hills ...	43-36 - 79
	Charles Loman, Swope Park .....	40-39 - 79
	Ray Spauer, Swope Park .....	37-42 - 79
	Morton Benedict, Swope Park ...	41-38 - 79
20	Dr. Bert McDowell, Milburn .....	41-39 - 80
	R.C. Coleman, Indian Hills .....	39-41 - 80
	A.E. Talbot, Ivanhoe .....	45-35 - 80
	Jack Seigler, Swope Park .....	41-39 - 80
	James Kunkel, Swope Park .....	40-40 - 80
25	William Hart, Swope Park .....	38-43 - 81
	Paul Moore, Mission Hills .....	42-39 - 81
	L.L. Drake, Milburn .....	40-41 - 81
28	Ray Loman, Hillcrest .....	40-42 - 82
	George Jones, Ivanhoe .....	44-38 - 82
	Claude Sadler, Swope Park .....	42-40 - 82
31	M.T. Swift, Milburn .....	45-38 - 83
	Def.W. Holmes, Ivanhoe .....	42-42 - 84
	R.P. Clark, Ivanhoe .....	40-43 - 83

**Junior Flight  
1st Round**

Willits	def	Cooper .....	4&2
McDowell	def	Shaw .....	3&2
Stephenson	def	Talbot .....	1 up (19)
Bombeck	def	Bauers .....	4&3
Wilkerson	def	Krakauer .....	2&1
James Clark	def	Callaway .....	2&1
Loeb	def	Cash .....	1 up
McGrath	def	Bland .....	2&1
Blevins	def	Alley .....	7&6
Robert Clark	def	Myers .....	3&2
Ballew	def	Hume .....	3&2
Myers	def	Reardon .....	4&3
Beyers	def	Udell .....	3&1
Oatman	def	Welton .....	1 up (20)
Norman	def	Loman .....	1 up
Carter	def	McMahon .....	2&1

**2nd Round**

McDowell	def	Willits .....	2&1
Bombeck	def	Stephenson .....	1 up
James Clark	def	Wilkerson .....	1 up (21)
McGrath	def	Loeb .....	4&2
Oatman	def	Robert Clark .....	2&1
Blevins	def	Ballew .....	4&2
Beyers	def	Myers .....	5&4
Carter	def	Norman .....	1 up

**Quarterfinals**

--	--	--	--

Bombeck	def	McDowell .....	5&4
McGrath	def	James Clark .....	5&4
Blevins	def	Oatman .....	3&2
Beyers	def	Carter .....	2&1

**Semifinals**

Bombeck	def	McGrath .....	1 up
Beyers	def	Blevins .....	1 up

**Finals**

Beyers	def	Bombeck .....	2 up
--------	-----	---------------	------

**Intermediate Flight**

**1st Round**

Duvall	def	R.P. Clark .....	5&4
Smith	def	Spauer .....	default
Williams	def	Drake .....	3&2
Royster	def	Seigler .....	1 up
Redding	def	Coleman .....	4&2
Sadler	def	Henry .....	1 up (19)
Boyd	def	Kunkel .....	2 up
Frank Aylward	def	Evans .....	4&2
Talbot	def	Charles Aylward ..	default
Goodwin	def	Moore .....	372
Weaver	def	Jones .....	default
Loman	def	Hatcher .....	5&4
McDowell	def	George Aylward .....	8&7
Stein	def	Hart .....	4&3
Benedict	def	Ryan .....	1 up
Loman	def	Gardner .....	2 up

**2nd Round**

Duvall	def	Smith .....	3&2
Williams	def	Royster .....	1 up (19)
Redding	def	Frank Aylward .....	3&2
Boyd	def	Sadler .....	3&2
Benedict	def	Loman .....	4&3
Talbot	def	Goodwin .....	4&3
Weaver	def	Loman .....	4&3
McDowell	def	Stein .....	1 up

**Quarterfinals**

Duvall	def	Williams .....	1 up (21)
Redding	def	Boyd .....	3&2
Benedict	def	Talbot .....	3&1
Weaver	def	McDowell .....	3&2

**Semifinals**

Duvall	def	Redding .....	5&4
Weaver	def	Benedict .....	3&1

**Finals**

Weaver	def	Duvall .....	1 up
--------	-----	--------------	------

**1937 City Championship Finals**

Beyers	def	Weaver .....	5&3
--------	-----	--------------	-----

Walter Blevins  
and  
Don Smith



Walter Blevins turned professional after his late 1930's amateur successes. In 1950 he was living in the Dallas, Texas area and was shot to death by a stray bullet while sitting on his front porch.

**1938**

Oakwood CC, Par 71  
July 19-24

**Junior Flight (29 and under)**

- 1 Carey Ballew, Jr, Blue Hills..... 71
- Grover Smith, Hillcrest..... 33-38 - 71
- 3 Logan Jenkins, Mission Hills .... 34-38 - 72
- 4 Bert McDowell, Jr, Milburn ..... 33-40 - 73
- 5 Larry Beyers, Swope Park ..... 36-38 - 74
- 6 Gene Smith, Meadow Lake ..... 38-37 - 75
- Glenn Oatman, Swope Park..... 38-37 - 75
- 8 Ted Bland, Indian Hills ..... 38-38 - 76
- 9 Walter Blevins, Swope Park ..... 35-42 - 77
- Jack Falk, Hillcrest ..... 39-38 - 77
- 11 Ken Krakauer, Meadow Lake .... 38-40 - 78
- 12 Jack DeWeese, Indian Hills ..... 40-39 - 79
- Jack Tobin, Meadow Lake ..... 39-40 - 79
- 14 Don Loeb, Oakwood..... 38-42 - 80
- Bob Davis, Jr, Blue Hills ..... 39-41 - 80
- Bill McGrath, Indian Hills ..... 40-40 - 80
- J.B. Bauers, Milburn ..... 41-39 - 80
- 18 G.C. Davis, Indian Hills ..... 40-41 - 81
- Jim Talbott, Ivanhoe ..... 41-40 - 81
- 20 W.F. Ruch, Meadow Lake..... 40-42 - 82
- 21 L.R. Spaur, Swope Park..... 41-43 - 84
- Ken Geary, Hillcrest ..... 43-41 - 84
- Ed Johnson, Meadow Lake ..... 40-44 - 84
- 24 Al Lighton, Oakwood ..... 43-42 - 85
- 25 Stan Durwood, Oakwood..... 44-42 - 86
- PhillipWade, Meadow Lake..... 42-44 - 86
- 27 Pat Uhlman, Oakwood..... 42-45 - 87
- 28 Leon Sittenfeld, Oakwood ..... 44-45 - 89
- 29 B.L. Hart, Hillcrest ..... 45-45 - 90
- David Skeer, Jr, Oakwood ..... 47-43 - 90
- 31 Larry Baltis, Meadow Lake ..... 42-50 - 92
- Joe Simmons, Meadow Lake ..... 44-48 - 92

**Intermediate Flight (30-49)**

- 1 Bill Powell, Indian Hills ..... 31-38 - 69
- 2 Grable Duvall, Jr, Hillcrest ..... 33-37 - 70
- 3 William Hart, Swope Park ..... 33-40 - 73
- 4 Ayres Bombeck, Indian Hills..... 37-37 - 74
- Ray Spaur, Swope Park ..... 37-37 - 74
- Ralph Redding, Hillcrest ..... 36-38 - 74
- 7 John Boyd, Blue Hills..... 36-39 - 75
- Martin Stein, Oakwood..... 39-36 - 75
- 9 Wes Dunlap, Swope Park..... 36-40 - 76
- Frank Weaver, Blue Hills..... 38-38 - 76
- Jim Williams, Hillcrest ..... 35-41 - 76
- 12 R.C. Coleman, Indian Hills..... 34-43 - 77

- Hap Gardner, Milburn..... 38-39 - 77
- 14 Gordon Mixon, Milburn ..... 39-39 - 78
- M.R. Smith, Indian Hills..... 38-40 - 78
- Fred Schindler, Meadow Lake... 37-41 - 78
- 17 Jack Shannon, Swope Park ..... 36-43 - 79
- J.N. Crouch, Meadow Lake ..... 37-42 - 79
- 19 G.W. Weston, Milburn ..... 40-40 - 80
- Charles Aylward, Swope Park ... 39-41 - 80
- G.P. Baltis, Meadow Lake ..... 38-42 - 80
- Joe Stewart, Meadow Lake..... 40-40 - 80
- A.J. Haynie, Swope Park ..... 38-42 - 80
- 24 Bert McDowell, Sr, Milburn..... 37-44 - 81
- 25 John Berkshire, Mission Hills... 39-43 - 82
- Ed Pugh, Indian Hills..... 42-40 - 82
- Al Couch, Hillcrest ..... 39-43 - 82
- 28 A.B. Henson, Meadow Lake..... 41-42 - 83
- 29 R.N. Miller, Hillcrest ..... 43-41 - 84
- 30 Bill Silberman, Oakwood ..... 41-44 - 85
- Lambert O'Malley, Milburn ..... 43-42 - 85
- 32 C.O. Lane, Meadow Lake..... 44-42 - 86

**Junior Flight (29 and under)**

**1st Round**

- Ballew def McGrath ..... 2&1
- Wade def Falk ..... 4&3
- Beyers def Spaur ..... 5&4
- DeWeese def Hart ..... 1 up
- Jenkins def G.C. Davis..... 2 up
- Krakauer def Uhlman..... 4&3
- Oatman def Geary..... 5&3
- Loeb def Baltis ..... 4&3

- Blevins def Durwood ..... 7&6
- Grover Smith def Talbott ..... 3&1
- Bob Davis, Jr def Skeer ..... 6&5
- Tobin def Sittenfeld ..... 8&6
- Gene Smith def Ed Johnson ..... 2&1
- McDowell def Ruch ..... 3&2
- Lighton def Bland ..... 5&4
- Bauers def Simmons ..... 4&3

**2nd Round**

- Ballew def Wade ..... 6&5
- DeWeese def Beyers ..... 2 up
- Oatman def Loeb ..... 6&4
- Krakauer def Jenkins ..... 2 up
- Blevins def Grover Smith.... 8&7
- Gene Smith def Davis ..... 7&6
- Tobin def McDowell, jr .... 2&1
- Bauers def Lighton..... 372

**Quarterfinals**

- Ballew def DeWeese ..... 5&4
- Oatman def Krakauer..... 4&3
- Blevins def Gene Smith ..... 5&4
- Tobin def Bauers ..... 1 up

**Semifinals**

- Oatman def Ballew ..... 3&1
- Blevins def Tobin ..... 4&2

**Finals**

- Blevins def Oatman..... 4&2

**Intermediate Flight (30-49)**

**1st Round**

- J.N. Crouch def Powell ..... 2&1
- Dunlap def Pugh ..... 5&3
- Coleman def R.N. Miller ..... 5&4
- Stein def Stewart ..... 6&5
- Redding def Haynie ..... 1 up
- Weston def Hart ..... 1 up
- Al Couch def Weaver ..... 1 up
- M.R. Smith def O'Malley ..... 7&6

- Duvall def Shannon ..... 6&5
- Bombeck def Aylward..... 4&3
- Gardner def Henson ..... 6&4
- Williams def Berkshire ..... 1 up
- Mixon def Silberman ..... 2&1
- Spaur def Baltis ..... 2&1
- McDowell def Boyd..... 3&2
- Schindler def Lane ..... 5&3

**2nd Round**

- Duvall def Williams ..... 2&1
- Mixon def Bombeck ..... 1 up
- Couch def Weston..... 1 up
- Stein def Smith ..... 6&5
- Dunlap def Crouch..... 5&4
- Redding def Coleman ..... 8&6
- Gardner def Spauer ..... 4&3
- McDowell, sr.def Schindler ..... 4&3

**Quarterfinals**

- Duvall def Mixon..... 5&4
- Couch def Stein ..... 4&3
- Dunlap def Redding ..... 1 up
- Gardner def McDowell ..... 3&2

**Semifinals**

- Dunlap def Couch ..... 5&3
- Duvall def Gardner ..... 1 up (19)

**Finals**

- Duvall def Dunlap..... 2&1

**1938 City Championship Finals**

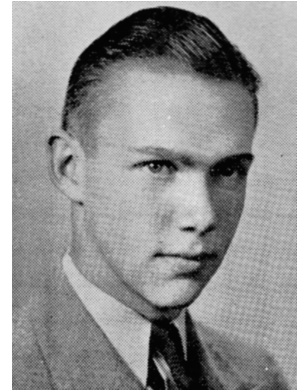
- Blevins def Duvall..... 4&2



Larry Beyers



#1 KCCC



Ray Watson



The front nine at the Kansas City CC  
Note polo field on left, where #5 is today

**1939**

Kansas City CC, Par 70  
July 11-15

1	Tom Stephenson, Milburn .....	72
2	Bob Busler, Mission Hills.....	73
3	Ayres Bombeck, Indian Hills.....	74
	Jack DeWeese, Indian Hills .....	74
	Buck Weaver, Blue Hills.....	74
	Hap Goodwin, KCCC.....	74
	Bill McGrath, Indian Hills .....	74
	Bill Powell, Indian Hills .....	74
	Ray Watson, KCCC .....	74
10	Dr. Bert McDowell, Blue Hills .....	75
	Ralph Wilkerson, Indian Hills .....	75
	Larry Beyers, Swope Park .....	75
	Harold Wickham, Milburn .....	75
14	John Harrington, Swope Park .....	76
15	Donald Loeb, Oakwood .....	77
	Logan Jenkins, Mission Hills .....	77
	Roger Kelly, Blue Hills .....	77
	Ralph Redding, Hillcrest .....	77
	Joe Fennelly, KCCC .....	77
20	Phil Wade, Jr., Swope Park .....	78
	Frank Dunlap, Hillcrest .....	78

	A.E. Talbot, Ivanhoe .....	78
	Ed J. Skradaki, Quivira .....	78
24	Bob Willits, KCCC .....	79
	A.G. Carter, Indian Hills.....	79
	Jim Hall, Jr., Quivira.....	79
	Lloyd Spaur, Swope Park .....	79
	Oliver W. Holmes, Indian Hills .....	79
29	Gordon Mixon, Blue Hills .....	80
	Charles Zeskey, Blue Hills .....	80
	M.H. Sandberg, Mission Hills .....	80
	Fred Schindler, Swope Park.....	80

**1st Round**

Stephenson	def	Loeb .....
DeWeese	def	Carter .....
Weaver	def	Wade .....
Mixon	def	McDowell .....
Goodwin	def	Jenkins .....
Willits	def	Wilkerson .....
McGrath	def	Dunlap.....
Kelly	def	Zeskey .....
Fennelly	def	Busler .....
Beyers	def	Hall.....
Powell	def	Talbot .....

Sandberg	def	Harrington .....
Bombeck	def	Skradski .....
Wickham	def	Spaur .....
Watson	def	Holmes .....
Redding	def	Schindler .....

**2nd Round**

DeWeese	def	Stephenson .....	1 up
Weaver	def	Mixon.....	2&1
Willits	def	Goodwin.....	2&1
McGrath	def	Kelly.....	5&4
Beyers	def	Fennelly .....	2&1
Powell	def	Sandberg .....	6&5
Wickham	def	Bombeck .....	2&1
Watson	def	Redding .....	4&3

**Quarterfinals**

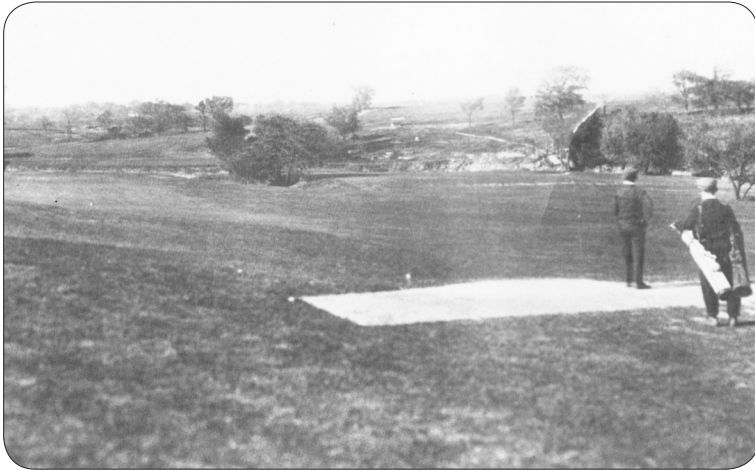
Beyers	def	Powell .....	5&4
Weaver	def	DeWeese .....	3&2
Willits	def	McGrath.....	5&4
Watson	def	Wickham .....	4&3

**Semifinals**

Beyers	def	Watson.....	3&2
Weaver	def	Willits.....	1 up (21)

**Finals**

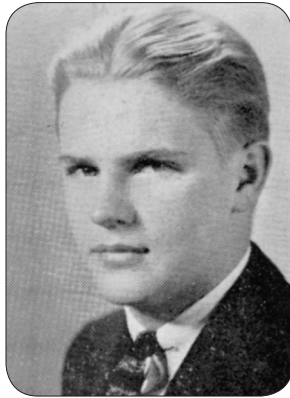
Beyer	def	
-------	-----	--



Mission Hills # 1 then, now #15 with the green on this side of the creek.



11th Street, 1940



Bob Willits



Mission Hills # 2

<b>1940</b>					
Mission Hills CC, Par 72					
July 15-20					
1	Ned Embry, Mission Hills .....72-72 - 144	25	Ralph Redding, Swope Park .....78-79 - 157	McGrath	def Moore ..... 4&3
2	Bob Willits, KCCC .....74-73 - 147		John Boyd, Milburn .....83-74 - 157	Hart	def Steine ..... 4&3
3	Frank Aylward, Blue Hills .....74-74 - 148		Dan Davis, Blue Hills .....76-81 - 157	Goodwin	def Carter ..... 4&3
	Hap Goodwin, KCCC .....76-72 - 148		Ed Hart, Swope Park .....81-76 - 157	Weaver	def Pallis ..... 4&3
	Bert McDowell, Jr., Blue Hills .73-75 - 148		John Rahm, Mission Hills .....80-78 - 158	Gardner	def Smith ..... 4&3
	Ralph Wilkerson, Indian Hills .74-74 - 148		Claude Myers, Jr., Indian Hills .83-75 - 158	<b>2nd Round</b>	
7	Dick Sloan, KCCC .....73-76 - 149		Hap Gardner, Hillcrest .....78-80 - 158	Weaver	def Gardner ..... 4&3
8	Ray Watson, KCCC .....75-75 - 150		Bob Carter, Milburn .....81-78 - 159	Stephenson	def Watson ..... 2&1
	Buck Weaver, Blue Hills .....73-77 - 150			Busler	def McDowell ..... 2&1
10	Bob Busler, Mission Hills .....76-75 - 151	<b>1st Round</b>		Johnson	def Sloan ..... 1 up (23)
	Bun Patt, Mission Hills .....75-76 - 151	Stephenson	def Embry ..... 2&1	Willits	def Patt ..... 3&1
	Martin Stein, Oakwood .....74-77 - 151	Watson	def Carter ..... 2&1	McGrath	def Wilkerson ..... 2&1
13	Bill Powell, Indian Hills .....76-76 - 152	Aylward	def Phelps ..... 2&1	Hart	def Goodwin ..... 5&4
	Bill McGrath, Indian Hills .....74-78 - 152	Redding	def Powell ..... 2&1	Aylward	def Redding ..... 6&5
	Grover Johnson, Quivira .....74-78 - 152	McDowell	def Swift ..... 3&2	<b>Quarterfinals</b>	
16	M.R. Smith, Indian Hills .....74-79 - 153	Busler	def Boyd ..... 6&4	Busler	def Johnson ..... 5&4
	Tom Stephenson, Milburn .....78-75 - 153	Sloan	def DeWeese ..... 3&2	Willits	def McGrath ..... 4&3
18	Harold Martin, Hillcrest .....74-80 - 154	Johnson	def Rahm ..... 6&5	Weaver	def Hart ..... 4&3
19	Speed Swift, Milburn .....77-78 - 155	Willits	def Martin ..... 7&6	Stephenson	def Aylward ..... 2&1
20	E.W. Phelps, Mission Hills .....75-81 - 156	Patt	def Davis ..... 5&4	<b>Semifinals</b>	
	Jack DeWeese, Indian Hills .....81-75 - 156	Wilkerson	def Jones ..... 1 up (21)	Willits	def Weaver ..... 5&3
				Busler	def Stephenson ..... 3&2
				<b>Finals</b>	
				Busler	def Willits ..... 5&3



Tom Stephenson  
 Champion 1941, 1946  
 Runner up 1947, 1949  
 Medalist 1939, 1951, 1952, 1958



Oakwood # 10 Par 5



Oakwood # 1  
 Par 4

**1941**

Oakwood CC, Par 71  
 July 14-19

1	Walter Cash, Swope Park.....	77-66 - 143	28	Frank Aylward, Blue Hills .....	76-80 - 156	Gordon Myers	def Gardner.....	2&1
	Hap Goodwin, KCCC .....	74-69 - 143		Dr. Bert McDowell, Blue Hills .....	79-77 - 156			
	Bill McGrath, Indian Hills .....	73-70 - 143		Irl Oliver, Blue Hills .....	80-76 - 156			
4	Glenn Newell, Hillcrest .....	71-73 - 144	32	Speed Swift, Swope Park.....	71-86 - 157	Stephenson	def Staller .....	3&2
5	Gene Smith, Indian Hills .....	73-72 - 145				Weaver	def Cash .....	1 up
	Tom Stephenson, Milburn .....	76-69 - 145				Gordon Myers	def Oliver.....	1 up
7	Gordon Myers, Indian Hills .....	75-71 - 146				Smith	def Carter.....	1 up
	Frank Staller, Indian Hills.....	71-75 - 146						
	Buck Weaver, Blue Hills.....	72-74 - 146						
10	Dan Davis, Blue Hills .....	71-76 - 147						
	Roy Davis, Swope Park .....	71-76 - 147						
	Grover Johnson, Quivira.....	74-73 - 147						
	Fred Schindler, Indian Hills.....	74-73 - 147						
14	Jack DeWeese, KCCC .....	77-71 - 148						
	Hap Gardner, Hillcrest .....	70-78 - 148						
	Bun Patt, Mission Hills.....	70-78 - 148						
17	Kelly Boswell, Ivanhoe .....	78-71 - 149						
	Bill Powell, Indian Hills .....	73-76 - 149						
19	Hi Myers, Indian Hills .....	74-77 - 151						
	Glenn Oatman, Hillcrest .....	76-75 - 151						
	Bill Shaw, Quivira .....	75-76 - 151						
22	A.J. Haynie, Swope Park .....	79-74 - 153						
	Claude Myers, Jr., Indian Hills .....	78-75 - 153						
24	Dan Byrne, Swope Park.....	80-74 - 154						
	Al Couch, Hillcrest .....	81-73 - 154						
26	Bob Carter, Milburn.....	80-75 - 155						
	Dale Hanchett, Hillcrest.....	77-78 - 155						

**1st Round**

Cash	def Shaw .....	6&5
DeWeese	def Aylward .....	1 up (20)
Oatman	def Newell .....	1 up (19)
Goodwin	def Bosell.....	4&2
Staller	def Byrne .....	3&2
Stephenson	def Hi Myers.....	4&3
Davis	def McDowell.....	6&5
Hanchett	def Schindler .....	1 up

**2nd Round**

Weaver	def Claude Myers ...	1 up
Patt	def Williams .....	1 up
Gordon Myers	def Couch .....	5&4
Oliver	def Johnson.....	2&1
Gardner	def Swift .....	3&1
Carter	def Davis .....	
McGrath	def Powell.....	
Smith	def Haynie .....	

**3rd Round**

Staller	def Goodwin.....	1 up
Stephenson	def Davis .....	3&2
Cash	def Hanchett .....	1 up
Weaver	def Patt.....	2&1
Carter	def McGrath .....	2&1
Smith	def DeWeese.....	1 up
Oliver	def Oatman .....	1 up

**Quarterfinals**

Stephenson	def Staller .....	3&2
Weaver	def Cash .....	1 up
Gordon Myers	def Oliver.....	1 up
Smith	def Carter.....	1 up

**Semi-finals**

Stephenson	def Weaver .....	1 up (22)
Gordon Myers	def Smith .....	4&3

**Finals**

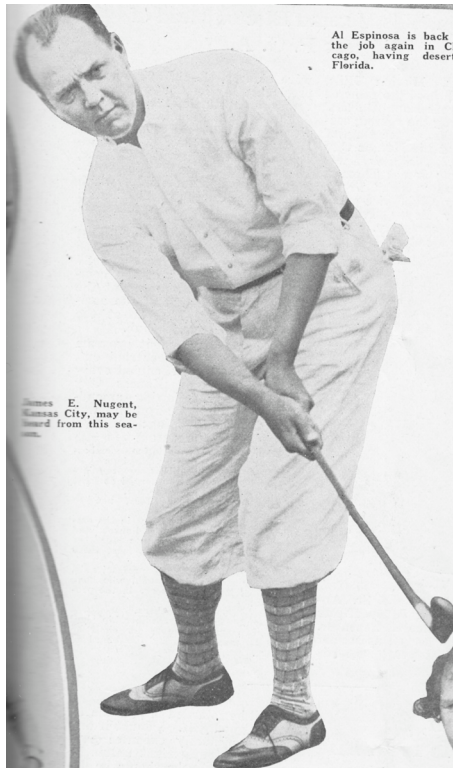
Stephenson	def Gordon Myers ..	2 up
------------	---------------------	------

**1942**

The KCGA Heart of America tournament was played in May of 1942, the Kansas City Women's Match Play in mid-July. An article in the *Kansas City Star* said men had asked for their match play tournament to be played, even in October, if necessary.

By October, however, most able-bodied men had joined the armed services for the duration of World War II. The next Kansas City Match Play would not be held until the summer of 1945.

# Photo Gallery



Al Espinosa is back the job again in Chicago, having desert Florida.

James E. Nugent, Kansas City, may be heard from this season.

James Nugent  
Runner-up 1919, 1930  
Semifinalist 1916, 1920



#1 at Swope Park in 1923. (routed across current #4 & #9 greens and practice area.) This was before A.W. Tillinghast redesigned the course in 1934.



Milburn #18  
in 1923, six years after the club opened



Larry Beyers  
Champion, 1937, 1939



Swope Park #3 in 1923, nine years before it was redesigned by A.W. Tillinghast in 1934.  
(now played in the opposite direction, west, as Swope Memorial #9.)

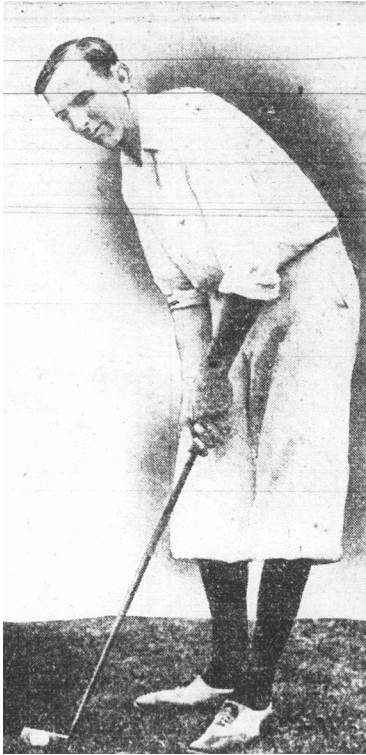


Meadow Lake, 1929  
George Wheat, Harry Slayback,  
Morton Benedict

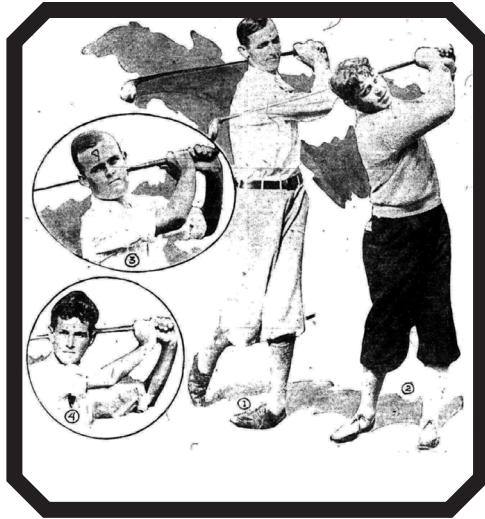


Carey Ballew, Morton Benedict and  
Paul Jackson, 1928

# Photo Gallery



Frank Aylward  
 Runner-up 1923, 1928  
 Medalist 1933  
 Missouri Amateur  
 Runner-up 1929



Frank Aylward, Morton Benedict, Paul Jackson  
 and Eddie Guettel, semifinalists 1928

Mission Hills CC  
 The layout of the course  
 prior to 1956 when the  
 present day clubhouse  
 replaced the Carriage  
 Club.

